

# Fabric Product Details

**PATTERN** Marumi  
**COLOR** 06

**BRAND**

**S. Harris**

**APPLICATION**

**Fabric**

**USES**

**Bedding, Drapery,  
Multipurpose, Upholstery**

**CATEGORIES**

**Silk, Wovens, Solids / Small  
Scale Patterns**

**COLORS**

**Red**

**DESIGN TYPES**

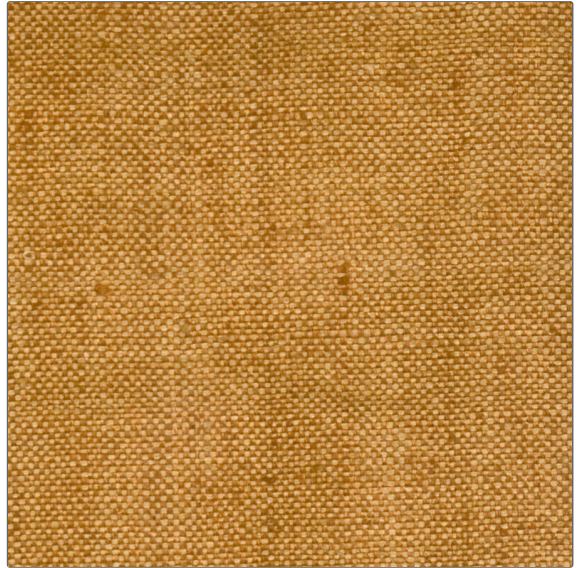
**Solid, Texture Plain**

**SCALE**

**Small**

**RAILROADED**

**Not Railroaded**



**WIDTH**

**54.00 in (137.16 cm)**

**VERTICAL REPEAT**

**0.00 in (0.00 cm)**

**HORIZONTAL REPEAT**

**0.00 in (0.00 cm)**

**CONTENT**

**100% Silk**

**BACKING**

**FIRE CODES**

**UFAC Class I, Passes NFPA  
260**

**DOUBLE RUBS**

**Exceeds 18,000 Double  
Rubs (Wyzenbeek Method)**

**PRODUCT NUMBER**

**8229206**

**COUNTRY**

**India**

**CLEANING CODES**

**S**

**ADDITIONAL PRODUCT NOTES**

**Exclusive Pattern, Silks Are Not, Guaranteed Against Fading Or, For Precise Color Matching,, Colorfastness And Durability.**