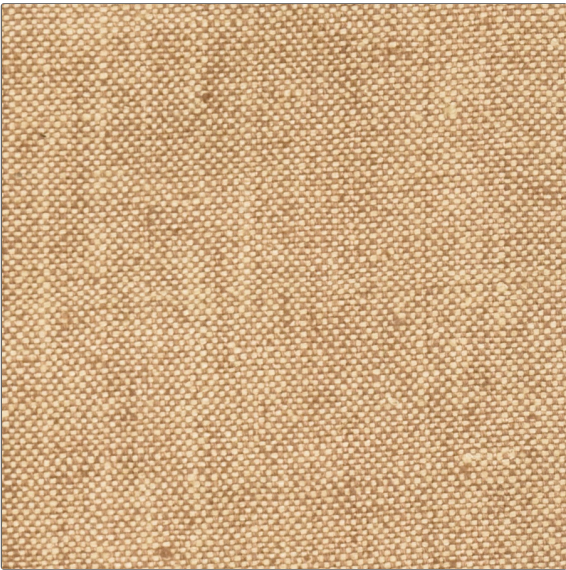


Fabric Product Details

PATTERN	Marumi
COLOR	11

BRAND	APPLICATION
S. Harris	Fabric
USES	CATEGORIES
Bedding, Drapery, Multipurpose, Upholstery	Silk, Wovens, Solids / Small Scale Patterns
COLORS	DESIGN TYPES
Beige	Solid, Texture Plain
SCALE	RAILROADED
Small	Not Railroaded



WIDTH	VERTICAL REPEAT	HORIZONTAL REPEAT	CONTENT
54.00 in (137.16 cm)	0.00 in (0.00 cm)	0.00 in (0.00 cm)	100% Silk
BACKING	FIRE CODES	DOUBLE RUBS	PRODUCT NUMBER
	UFAC Class I, Passes NFPA 260	Exceeds 18,000 Double Rubs (Wyzenbeek Method)	8229211
COUNTRY	CLEANING CODES		
India	S		

ADDITIONAL PRODUCT NOTES
Exclusive Pattern, Silks Are Not, Guaranteed Against Fading Or, For Precise Color Matching,, Colorfastness And Durability.