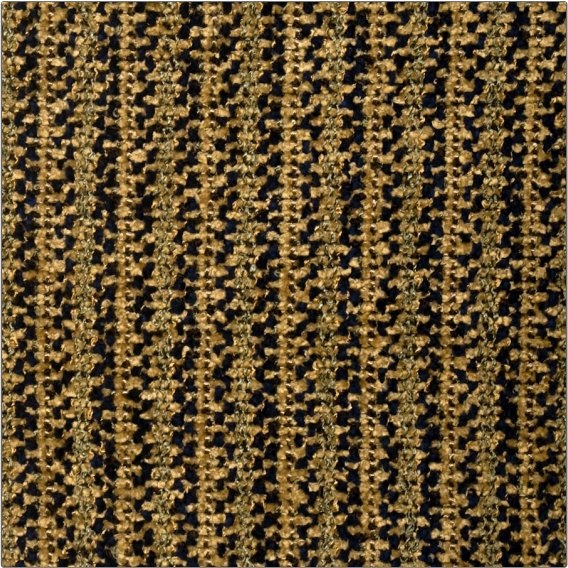


# Fabric Product Details

**PATTERN** Targhee  
**COLOR** Royal



|                  |                     |
|------------------|---------------------|
| <b>BRAND</b>     | <b>APPLICATION</b>  |
| S. Harris        | Fabric              |
| <b>USES</b>      | <b>CATEGORIES</b>   |
| Upholstery       | Wovens, Chenille    |
| <b>COLORS</b>    | <b>DESIGN TYPES</b> |
| Blue             | Texture Plain       |
| <b>RAILOADED</b> |                     |
| Railroaded       |                     |

|                      |                        |   |                       |
|----------------------|------------------------|---|-----------------------|
| <b>WIDTH</b>         | <b>VERTICAL REPEAT</b> | <b>HORIZONTAL REPEAT</b>                      | <b>CONTENT</b>        |
| 54.00 in (137.16 cm) | 0.00 in (0.00 cm)      | 1.30 in (3.30 cm)                             | 100% Rayon            |
| <b>BACKING</b>       | <b>FIRE CODES</b>      | <b>DOUBLE RUBS</b>                            | <b>PRODUCT NUMBER</b> |
| Knit Backed          | UFAC Class I           | Exceeds 24,000 Double Rubs (Wyzenbeek Method) | 8320101               |
| <b>COUNTRY</b>       | <b>CLEANING CODES</b>  |   |                       |
| USA                  | S                      |   |                       |

**ADDITIONAL PRODUCT NOTES**

Knit Backed, Shown Railroaded, Exclusive Pattern