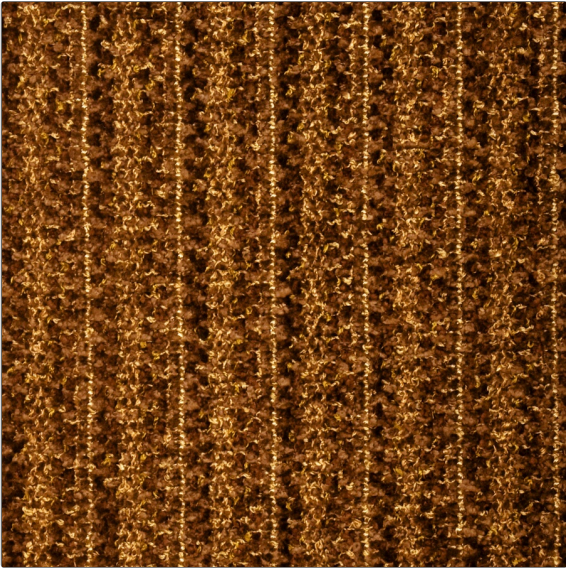


Fabric Product Details

PATTERN Targhee
COLOR Tobacco



BRAND	APPLICATION
S. Harris	Fabric
USES	CATEGORIES
Upholstery	Wovens, Chenille
COLORS	DESIGN TYPES
Brown	Texture Plain
RAILOADED	
Railroaded	

WIDTH	VERTICAL REPEAT	HORIZONTAL REPEAT	CONTENT
54.00 in (137.16 cm)	0.00 in (0.00 cm)	1.30 in (3.30 cm)	100% Rayon
BACKING	FIRE CODES	DOUBLE RUBS	PRODUCT NUMBER
Knit Backed	UFAC Class I	Exceeds 24,000 Double Rubs (Wyzenbeek Method)	8320103
COUNTRY	CLEANING CODES		
USA	S		

ADDITIONAL PRODUCT NOTES

Knit Backed, Shown Railroaded, Exclusive Pattern