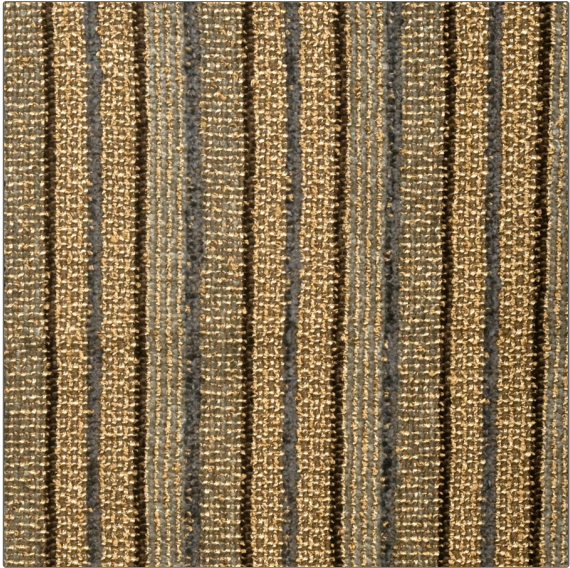


# Fabric Product Details

**PATTERN** Teton  
**COLOR** Mist

|   |                     |
|---|---------------------|
| <b>BRAND</b>                                | <b>APPLICATION</b>  |
| S. Harris                                   | Fabric              |
| <b>USES</b>                                 | <b>CATEGORIES</b>   |
| Upholstery                                  | Wovens, Chenille    |
| <b>COLORS</b>                               | <b>DESIGN TYPES</b> |
| Light Blue, Brown, Taupe / Tan, Aqua / Teal | Stripes             |
| <b>SCALE</b>                                | <b>RAILROADED</b>   |
| Small                                       | Railroaded          |



|                      |                        |   |                       |
|----------------------|------------------------|---|-----------------------|
| <b>WIDTH</b>         | <b>VERTICAL REPEAT</b> | <b>HORIZONTAL REPEAT</b>                      | <b>CONTENT</b>        |
| 54.00 in (137.16 cm) | 0.00 in (0.00 cm)      | 3.00 in (7.62 cm)                             | 92% Rayon 8% Cotton   |
| <b>BACKING</b>       | <b>FIRE CODES</b>      | <b>DOUBLE RUBS</b>                            | <b>PRODUCT NUMBER</b> |
| Knit Backed          | UFAC Class I           | Exceeds 24,000 Double Rubs (Wyzenbeek Method) | 8321302               |
| <b>COUNTRY</b>       | <b>CLEANING CODES</b>  |   |                       |
| USA                  | S                      |   |                       |

**ADDITIONAL PRODUCT NOTES**

Knit Backed, Shown Railroaded, Exclusive Pattern