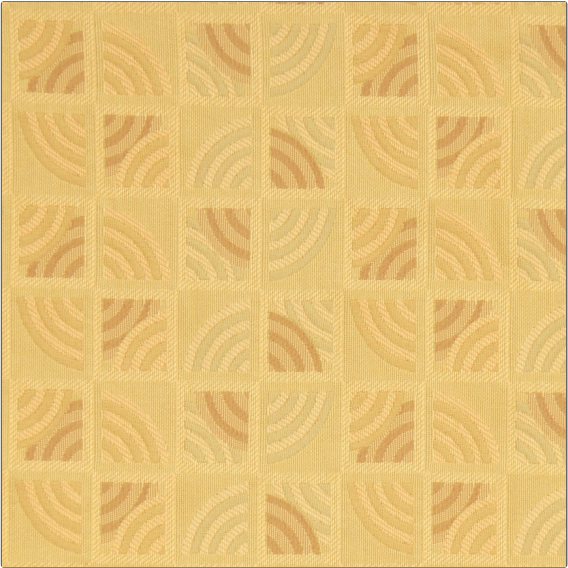


Fabric Product Details

PATTERN York Factory
COLOR 01



BRAND	APPLICATION
S. Harris	Fabric
USES	CATEGORIES
Bedding, Drapery, Multipurpose, Upholstery	Wovens
COLORS	DESIGN TYPES
Beige, Taupe / Tan	Geometric, Jacquard Pattern, Small Scale Woven, Check / Plaid, Contemporary / Modern
SCALE	RAILROADED
Small	Not Railroaded

WIDTH	VERTICAL REPEAT	HORIZONTAL REPEAT	CONTENT
54.00 in (137.16 cm)	4.50 in (11.43 cm)	2.50 in (6.35 cm)	64% Polyester 36% Rayon
BACKING	FIRE CODES	DOUBLE RUBS	PRODUCT NUMBER
	UFAC Class I	Exceeds 50,000 Double Rubs (Wyzenbeek Method)	8364301
COUNTRY	CLEANING CODES		
USA	S		

ADDITIONAL PRODUCT NOTES

Exclusive Pattern