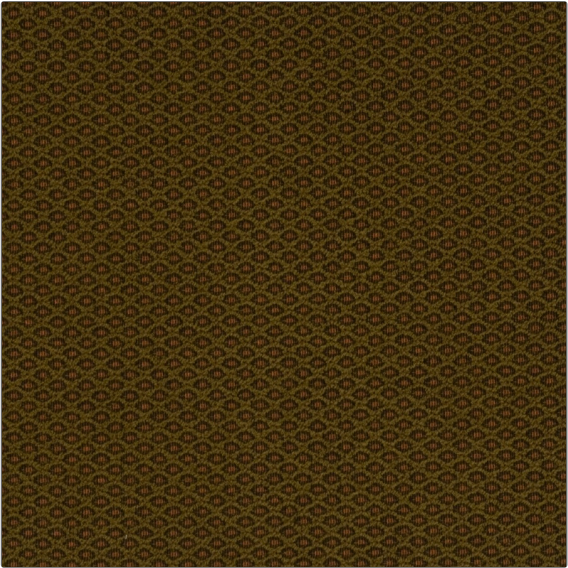


Fabric Product Details

|         |         |
|---------|---------|
| PATTERN | Morandi |
| COLOR   | Saffron |

|                              |                        |
|------------------------------|------------------------|
| BRAND                        | APPLICATION            |
| S. Harris                    | Fabric                 |
| USES                         | CATEGORIES             |
| Upholstery                   | Wovens                 |
| COLORS                       | DESIGN TYPES           |
| Brown, Green, Orange / Spice | Texture Plain, Diamond |
| SCALE                        | RAILROADED             |
| Small                        | Railroaded             |



|                      |                   |   |                |
|----------------------|-------------------|---|----------------|
| WIDTH                | VERTICAL REPEAT   | HORIZONTAL REPEAT                             | CONTENT        |
| 54.00 in (137.16 cm) | 1.20 in (3.05 cm) | 1.10 in (2.79 cm)                             | 100% Polyester |
| BACKING              | FIRE CODES        | DOUBLE RUBS                                   | PRODUCT NUMBER |
| 100% Acrylic Backing | UFAC Class I      | Exceeds 50,000 Double Rubs (Wyzenbeek Method) | 8370309        |
| COUNTRY              | CLEANING CODES    |   |                |
| USA                  | S                 |   |                |

|   |
|---|
| ADDITIONAL PRODUCT NOTES                                  |
| 100% Acrylic Backing, Shown Railroaded, Exclusive Pattern |