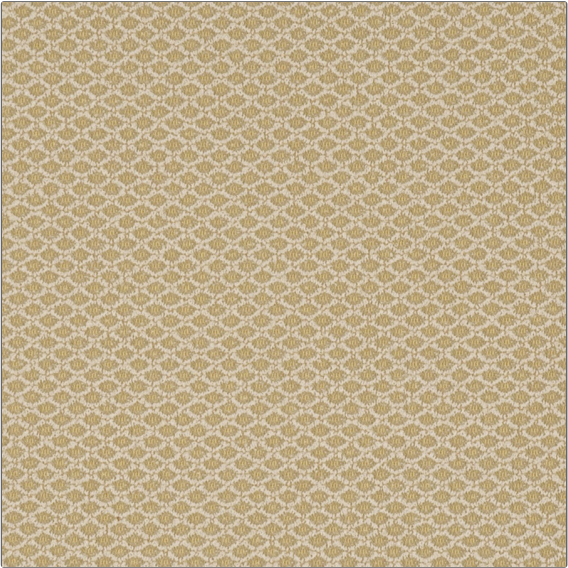


# Fabric Product Details

**PATTERN** Morandi  
**COLOR** Martini



<b>BRAND</b>	<b>APPLICATION</b>
S. Harris	Fabric
<b>USES</b>	<b>CATEGORIES</b>
Upholstery	Wovens
<b>COLORS</b>	<b>DESIGN TYPES</b>
Beige, Taupe / Tan, Gold	Texture Plain, Diamond
<b>SCALE</b>	<b>RAILROADED</b>
Small	Railroaded

<b>WIDTH</b>	<b>VERTICAL REPEAT</b>	<b>HORIZONTAL REPEAT</b>	<b>CONTENT</b>
54.00 in (137.16 cm)	1.20 in (3.05 cm)	1.10 in (2.79 cm)	100% Polyester
<b>BACKING</b>	<b>FIRE CODES</b>	<b>DOUBLE RUBS</b>	<b>PRODUCT NUMBER</b>
100% Acrylic Backing	UFAC Class I	Exceeds 50,000 Double Rubs (Wyzenbeek Method)	8380701
<b>COUNTRY</b>	<b>CLEANING CODES</b>		
USA	S		

**ADDITIONAL PRODUCT NOTES**

100% Acrylic Backing, Shown Railroaded, Exclusive Pattern