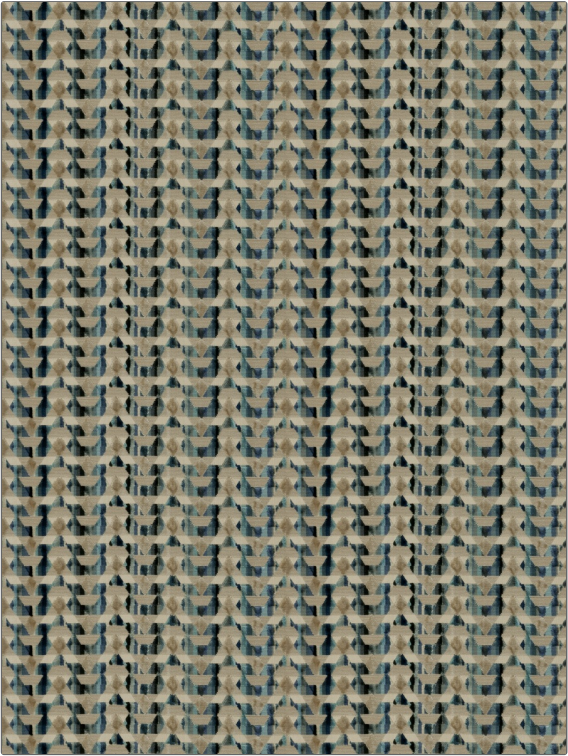


Fabric Product Details

PATTERN Hasina
COLOR 03

BRAND	APPLICATION
S. Harris	Fabric
USES	CATEGORIES
Upholstery	Velvet / Grospoint, Wovens
COLORS	DESIGN TYPES
Blue, Aqua / Teal	Contemporary / Modern
SCALE	RAILROADED
Medium	Not Railroaded



WIDTH	VERTICAL REPEAT	HORIZONTAL REPEAT	CONTENT
52.00 in (132.08 cm)	1.80 in (4.57 cm)	13.60 in (34.54 cm)	92% Viscose, 8% Polyester
BACKING	FIRE CODES	DOUBLE RUBS	PRODUCT NUMBER
	UFAC Class I / NFPA 260	Exceeds 20,000 Double Rubs (Wyzenbeek Method)	8410203
COUNTRY	CLEANING CODES		
Belgium	S		

ADDITIONAL PRODUCT NOTES

Passes 25,000 Martindale Tst, Ca Tb 117-2013, Exclusive Pattern