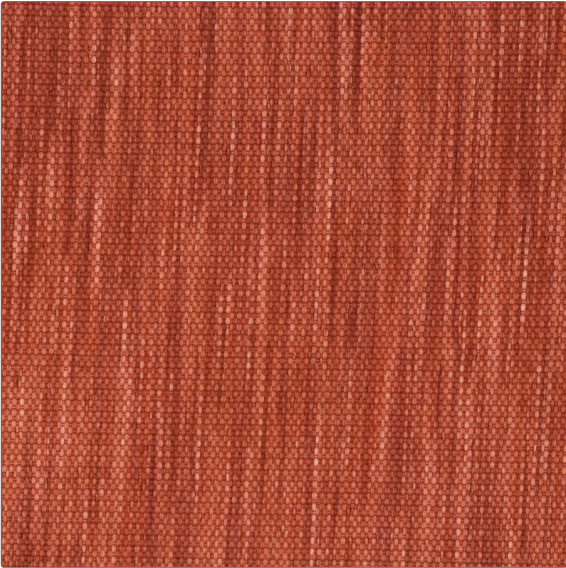


Fabric Product Details

PATTERN Baymont
COLOR Berry



BRAND	APPLICATION
S. Harris	Fabric
USES	CATEGORIES
Upholstery	Wovens, Solids / Small Scale Patterns, Eco / Environment Plus
COLORS	DESIGN TYPES
Coral / Peach, Pink, Red	Texture Plain
SCALE	RAILROADED
Small	Railroaded

WIDTH	VERTICAL REPEAT	HORIZONTAL REPEAT	CONTENT
52.00 in (132.08 cm)	0.00 in (0.00 cm)	0.00 in (0.00 cm)	100% Recycled Polyester
BACKING	FIRE CODES	DOUBLE RUBS	PRODUCT NUMBER
Backing	UFAC Class I	Exceeds 50,000 Double Rubs (Wyzenbeek Method)	8462804
COUNTRY	CLEANING CODES		
USA	S		

ADDITIONAL PRODUCT NOTES

Shown Railroaded, Exclusive Pattern, Backing, Eco / Environment Plus