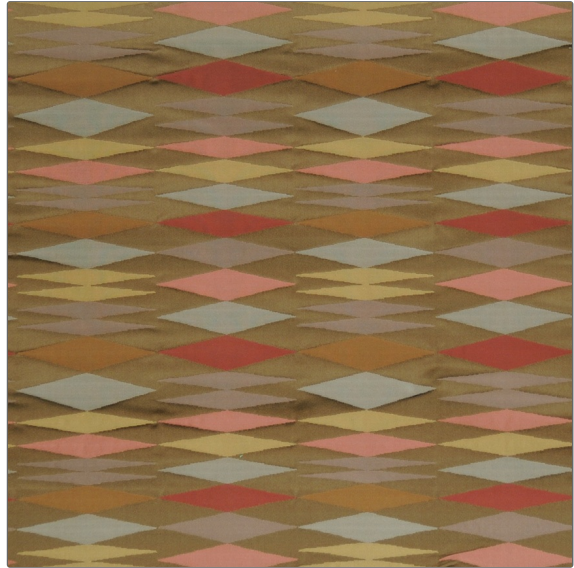


# Fabric Product Details

|  |  |
|--|--|
| <b>PATTERN</b>   | <b>Mod Silk</b>  |
| <b>COLOR</b>   | <b>Blush</b>   |
| <b>BRAND</b>   | <b>APPLICATION</b>   |
| <b>S. Harris</b>   | <b>Fabric</b>  |
| <b>USES</b>  | <b>CATEGORIES</b>  |
| <b>Bedding, Drapery, Multipurpose, Upholstery</b>        | <b>Silk, Wovens</b>  |
| <b>COLORS</b>  | <b>DESIGN TYPES</b>  |
| <b>Lavender / Purple, Brown, Gold, Pink, Multi-Color</b> | <b>Geometric, Jacquard Pattern, Contemporary / Modern, Diamond</b> |
| <b>SCALE</b>   | <b>RAILROADED</b>  |
| <b>Medium</b>  | <b>Not Railroaded</b>  |



|                             |                                      |  |                       |
|-----------------------------|--------------------------------------|--|-----------------------|
| <b>WIDTH</b>                | <b>VERTICAL REPEAT</b>               | <b>HORIZONTAL REPEAT</b>                             | <b>CONTENT</b>        |
| <b>54.00 in (137.16 cm)</b> | <b>6.50 in (16.51 cm)</b>            | <b>7.00 in (17.78 cm)</b>                            | <b>100% Silk</b>      |
| <b>BACKING</b>              | <b>FIRE CODES</b>                    | <b>DOUBLE RUBS</b>                                   | <b>PRODUCT NUMBER</b> |
|                             | <b>UFAC Class I, Passes NFPA 260</b> | <b>Exceeds 30,000 Double Rubs (Wyzenbeek Method)</b> | <b>8486005</b>        |
| <b>COUNTRY</b>              | <b>CLEANING CODES</b>                |  |                       |
| <b>India</b>                | <b>S</b>                             |  |                       |

**ADDITIONAL PRODUCT NOTES**

**Exclusive Pattern, Silks Are Not, Guaranteed Against Fading Or, For Precise Color Matching,, Colorfastness And Durability.**