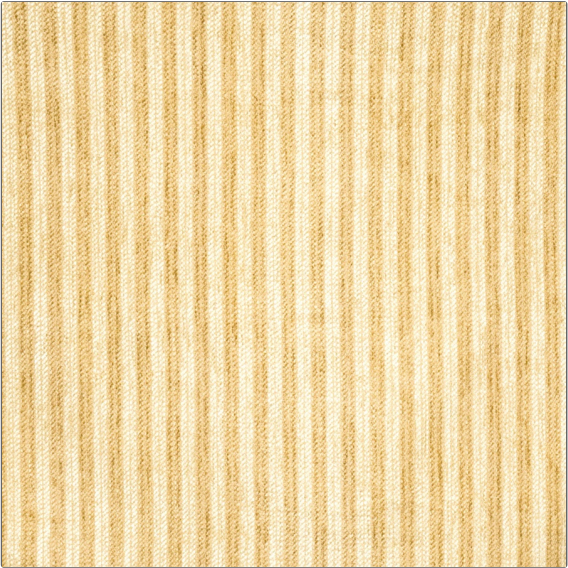


# Fabric Product Details

**PATTERN** Belva Stripe  
**COLOR** Biscotti



<b>BRAND</b>	<b>APPLICATION</b>
S. Harris	Fabric
<b>USES</b>	<b>CATEGORIES</b>
Upholstery	Wovens, Solids / Small Scale Patterns, Chenille
<b>COLORS</b>	<b>DESIGN TYPES</b>
Beige, Off White / Ivory	Stripes
<b>SCALE</b>	<b>RAILROADED</b>
Small	Not Railroaded

<b>WIDTH</b>	<b>VERTICAL REPEAT</b>	<b>HORIZONTAL REPEAT</b>	<b>CONTENT</b>
53.00 in (134.62 cm)	1.20 in (3.05 cm)	0.00 in (0.00 cm)	75% Rayon 25% Bamboo
<b>BACKING</b>	<b>FIRE CODES</b>	<b>DOUBLE RUBS</b>	<b>PRODUCT NUMBER</b>
100% Acrylic Backing	UFAC Class II	Exceeds 15,000 Double Rubs (Wyzenbeek Method)	8517601
<b>COUNTRY</b>	<b>CLEANING CODES</b>		
USA	S		

**ADDITIONAL PRODUCT NOTES**

100% Acrylic Backing, Exclusive Pattern