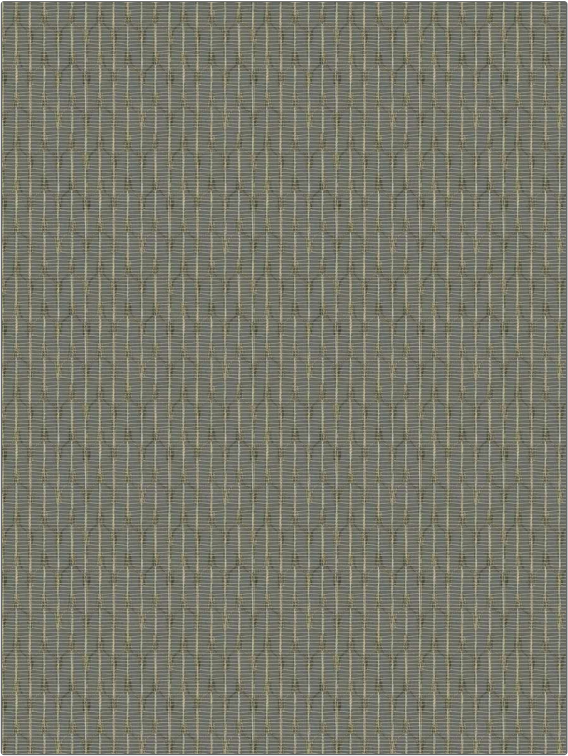


Fabric Product Details

PATTERN **Shinrin Sheer**
COLOR **Bark**

BRAND	APPLICATION
S. Harris	Fabric
USES	CATEGORIES
Drapery	Wide Width, NFPA 701 FR, Sheer, Casements
BOOK	COLORS
East West	Taupe / Tan
DESIGN TYPES	RAILROADED
Geometric, Contemporary / Modern	Railroaded



WIDTH	VERTICAL REPEAT	HORIZONTAL REPEAT	CONTENT
109.00 in (276.86 cm)	0.83 in (2.11 cm)	1.97 in (5.00 cm)	100% Polyester
BACKING	FIRE CODES	PRODUCT NUMBER	DATE BOOKED
	Passes NFPA 701	8517802	09/2023
COUNTRY	CLEANING CODES		
Turkey	S		

ADDITIONAL PRODUCT NOTES
Shown Railroaded, Exclusive Pattern