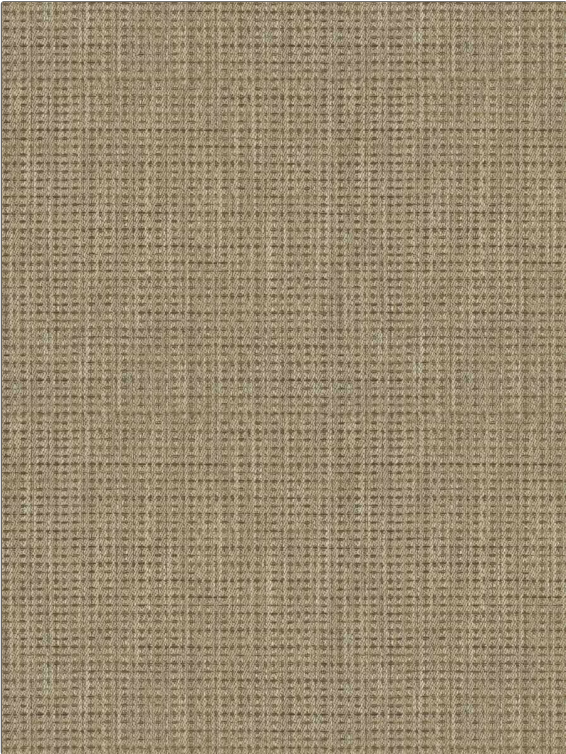


Fabric Product Details

PATTERN Yin Yang
COLOR Asawa White



BRAND	APPLICATION
S. Harris	Fabric
USES	CATEGORIES
Bedding, Multipurpose, Upholstery	Wovens
BOOK	COLORS
Elements W23	Beige, Taupe / Tan
DESIGN TYPES	RAILROADED
Small Scale Woven	Not Railroaded

WIDTH	VERTICAL REPEAT	HORIZONTAL REPEAT	CONTENT
55.00 in (139.70 cm)	0.00 in (0.00 cm)	0.00 in (0.00 cm)	51% Polyester, 33% Viscose, 16% Linen
BACKING	FIRE CODES	DOUBLE RUBS	PRODUCT NUMBER
	UFAC Class I / NFPA 260	Exceeds 55,000 Double Rubs (Wyzenbeek Method)	8520702
DATE BOOKED	COUNTRY	CLEANING CODES	
09/2023	Italy	S	

ADDITIONAL PRODUCT NOTES

Ca Tb 117-2013, Exclusive Pattern