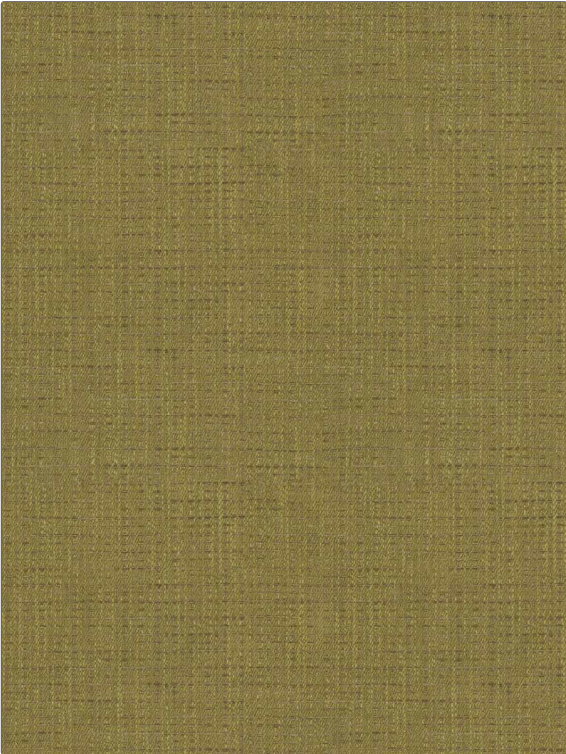


Fabric Product Details

PATTERN Yin Yang
COLOR Limesong

BRAND	APPLICATION
S. Harris	Fabric
USES	CATEGORIES
Bedding, Multipurpose, Upholstery	Wovens
BOOK	COLORS
Elements W23	Green, Light Green
DESIGN TYPES	RAILROADED
Small Scale Woven	Not Railroaded



WIDTH	VERTICAL REPEAT	HORIZONTAL REPEAT	CONTENT
55.00 in (139.70 cm)	0.00 in (0.00 cm)	0.00 in (0.00 cm)	51% Polyester, 33% Viscose, 16% Linen
BACKING	FIRE CODES	DOUBLE RUBS	PRODUCT NUMBER
	UFAC Class I / NFPA 260	Exceeds 55,000 Double Rubs (Wyzenbeek Method)	8520704
DATE BOOKED	COUNTRY	CLEANING CODES	
09/2023	Italy	S	

ADDITIONAL PRODUCT NOTES

Ca Tb 117-2013, Exclusive Pattern