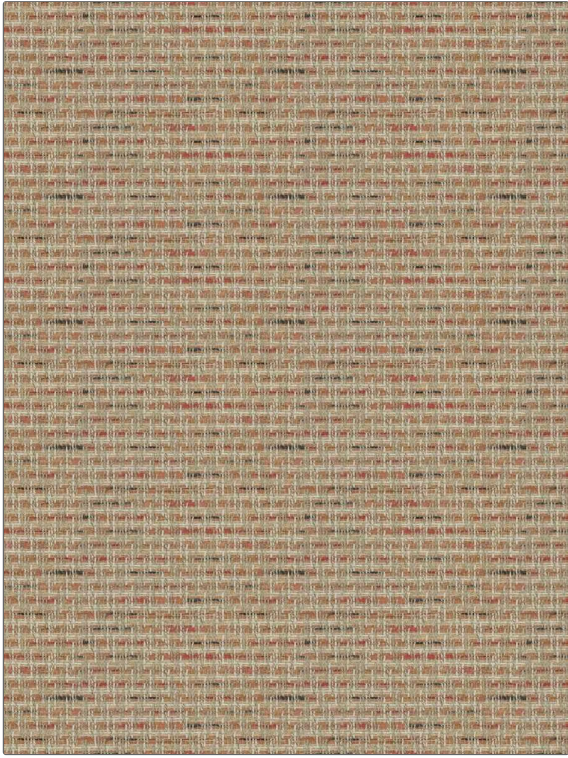


# Fabric Product Details

<b>PATTERN</b>	<b>Shen Herringbone</b>
<b>COLOR</b>	<b>03</b>
<b>BRAND</b>	<b>APPLICATION</b>
<b>S. Harris</b>	<b>Fabric</b>
<b>USES</b>	<b>CATEGORIES</b>
<b>Bedding, Multipurpose, Upholstery</b>	<b>Wovens, Chenille</b>
<b>COLORS</b>	<b>DESIGN TYPES</b>
<b>Coral / Peach, Pink, Multi-Color</b>	<b>Herringbone, Small Scale Woven, Contemporary / Modern</b>
<b>SCALE</b>	<b>RAILROADED</b>
<b>Small</b>	<b>Not Railroaded</b>



<b>WIDTH</b>	<b>VERTICAL REPEAT</b>	<b>HORIZONTAL REPEAT</b>	<b>CONTENT</b>
<b>55.00 in (139.70 cm)</b>	<b>0.00 in (0.00 cm)</b>	<b>3.54 in (8.99 cm)</b>	<b>35% Polyester, 30% Cotton, 23% Viscose, 6% Wool, 3% Nylon, 2% Linen, 1% Acrylic</b>
<b>BACKING</b>	<b>FIRE CODES</b>	<b>DOUBLE RUBS</b>	<b>PRODUCT NUMBER</b>
	<b>UFAC Class I / NFPA 260</b>	<b>Exceeds 60,000 Double Rubs (Wyzenbeek Method)</b>	<b>8528603</b>
<b>COUNTRY</b>	<b>CLEANING CODES</b>		
<b>Italy</b>	<b>S</b>		

**ADDITIONAL PRODUCT NOTES**

**Passes 28,000 Martindale Tst, Ca Tb 117-2013, Exclusive Pattern**