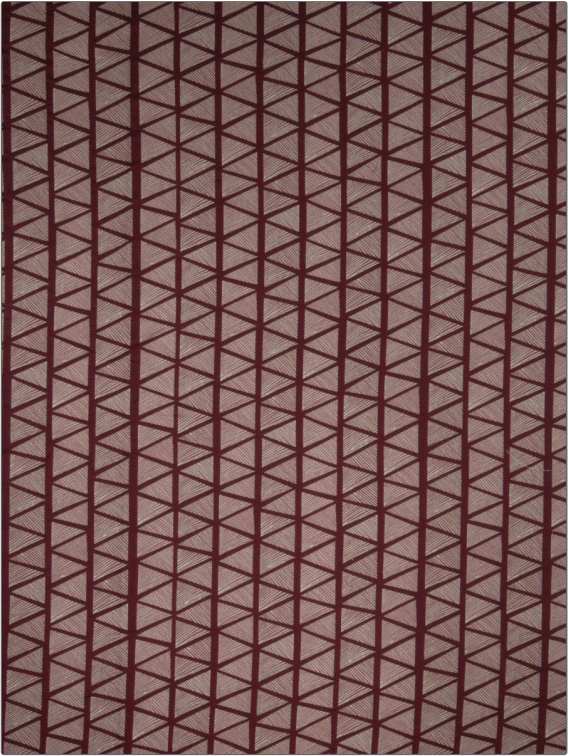


Fabric Product Details

PATTERN	Pololu Valley
COLOR	Lava

BRAND	APPLICATION
S. Harris	Fabric
USES	CATEGORIES
Upholstery	Wovens
COLORS	DESIGN TYPES
Red	Global / Ethnic, Diamond
SCALE	RAILROADED
Medium	Railroaded



WIDTH	FINISH	VERTICAL REPEAT	HORIZONTAL REPEAT
54.00 in (137.16 cm)	Soil & Stain Repellent Finish	13.50 in (34.29 cm)	20.00 in (50.80 cm)
CONTENT	BACKING	FIRE CODES	DOUBLE RUBS
68% Rayon, 32% Polyester		UFAC Class I, Passes NFPA 260	Exceeds 51,000 Double Rubs (Wyzenbeek Method)
PRODUCT NUMBER	COUNTRY	CLEANING CODES	
8541101	USA	S	

ADDITIONAL PRODUCT NOTES
Soil & Stain Repellent Finish, Hable Construction, Shown Railroaded, Exclusive Pattern