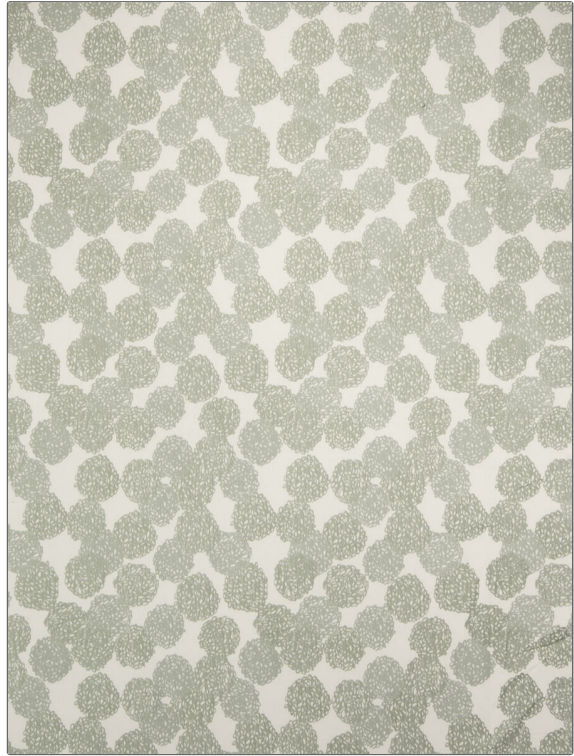


# Fabric Product Details

**PATTERN** Wailea  
**COLOR** Fog

<b>BRAND</b>	<b>APPLICATION</b>
S. Harris	Fabric
<b>USES</b>	<b>CATEGORIES</b>
Upholstery	Wovens
<b>COLORS</b>	<b>DESIGN TYPES</b>
Light Green	Floral, Contemporary / Modern, Dots / Circles
<b>SCALE</b>	<b>RAILOADED</b>
Medium	Railroaded



<b>WIDTH</b>	<b>FINISH</b>	<b>VERTICAL REPEAT</b>	<b>HORIZONTAL REPEAT</b>
54.00 in (137.16 cm)	Soil & Stain Repellent Finish	13.70 in (34.80 cm)	13.50 in (34.29 cm)
<b>CONTENT</b>	<b>BACKING</b>	<b>FIRE CODES</b>	<b>DOUBLE RUBS</b>
36% Polyester, 32% Rayon, 32% Cotton	100% Acrylic Backing	UFAC Class I, Passes NFPA 260	Exceeds 51,000 Double Rubs (Wyzenbeek Method)
<b>PRODUCT NUMBER</b>	<b>COUNTRY</b>	<b>CLEANING CODES</b>	
8542102	USA	S	

**ADDITIONAL PRODUCT NOTES**

Soil & Stain Repellent Finish, 100% Acrylic Backing, Hable Construction, Shown Railroaded, Exclusive Pattern