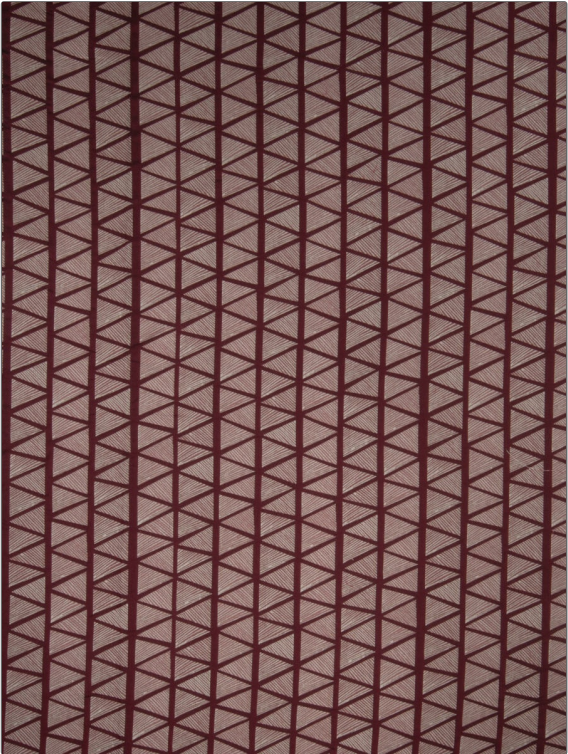


Fabric Product Details

|         |      |
|---------|------|
| PATTERN | Pama |
| COLOR   | Lava |

|            |                          |
|------------|--------------------------|
| BRAND      | APPLICATION              |
| S. Harris  | Fabric                   |
| USES       | CATEGORIES               |
| Upholstery | Wovens                   |
| COLORS     | DESIGN TYPES             |
| Red        | Global / Ethnic, Diamond |
| SCALE      | RAILROADED               |
| Medium     | Railroaded               |



|                          |                               |                               |   |
|--------------------------|-------------------------------|-------------------------------|---|
| WIDTH                    | FINISH                        | VERTICAL REPEAT               | HORIZONTAL REPEAT                             |
| 54.00 in (137.16 cm)     | Soil & Stain Repellent Finish | 13.50 in (34.29 cm)           | 20.00 in (50.80 cm)                           |
| CONTENT                  | BACKING                       | FIRE CODES                    | DOUBLE RUBS                                   |
| 68% Rayon, 32% Polyester |                               | UFAC Class I, Passes NFPA 260 | Exceeds 51,000 Double Rubs (Wyzenbeek Method) |
| PRODUCT NUMBER           | COUNTRY                       | CLEANING CODES                |   |
| 8565401                  | USA                           | S                             |   |

|  |
|--|
| ADDITIONAL PRODUCT NOTES   |
| Soil & Stain Repellent Finish, Hable Construction, Shown Railroaded, Exclusive Pattern |