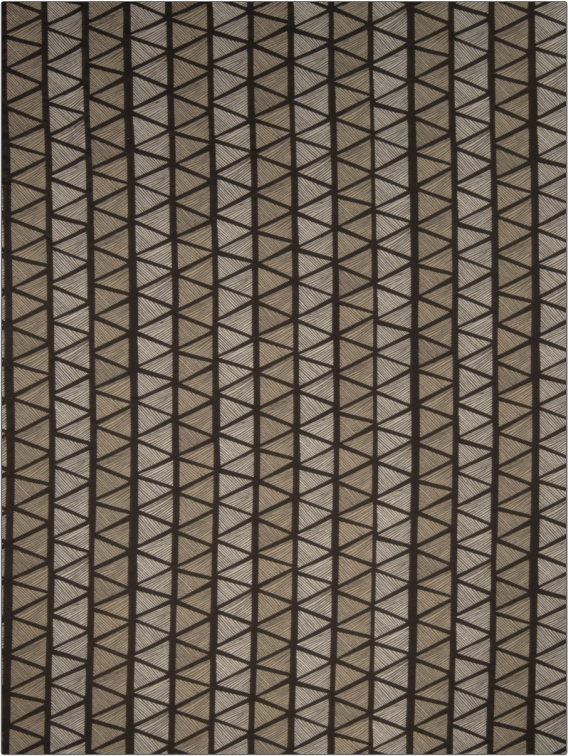


Fabric Product Details

PATTERN	Pama
COLOR	Volcano

BRAND	APPLICATION
S. Harris	Fabric
USES	CATEGORIES
Upholstery	Wovens
COLORS	DESIGN TYPES
Brown	Global / Ethnic, Diamond
SCALE	RAILOADED
Medium	Railroaded



WIDTH	FINISH	VERTICAL REPEAT	HORIZONTAL REPEAT
54.00 in (137.16 cm)	Soil & Stain Repellent Finish	13.50 in (34.29 cm)	20.00 in (50.80 cm)
CONTENT	BACKING	FIRE CODES	DOUBLE RUBS
68% Rayon, 32% Polyester		UFAC Class I, Passes NFPA 260	Exceeds 51,000 Double Rubs (Wyzenbeek Method)
PRODUCT NUMBER	COUNTRY	CLEANING CODES	
8565402	USA	S	

ADDITIONAL PRODUCT NOTES
Soil & Stain Repellent Finish, Hable Construction, Shown Railroaded, Exclusive Pattern