

Fabric Product Details

PATTERN  
COLOR

Copious  
Mushroom

BRAND

S. Harris

APPLICATION

Fabric

USES

Upholstery

CATEGORIES

Wool, Velvet / Grospoint,  
Wovens

BOOK

Elements

COLORS

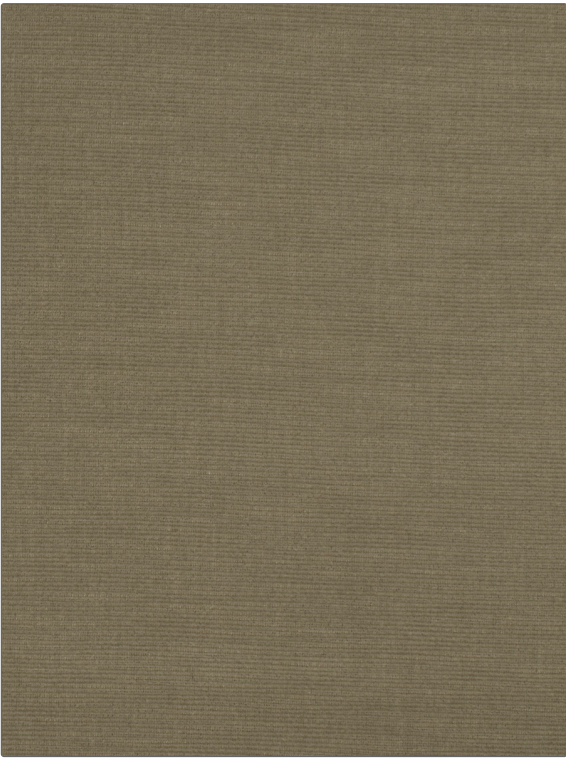
Taupe / Tan

DESIGN TYPES

Solid, Texture Plain

RAILROADED

Not Railroaded



WIDTH

54.00 in (137.16 cm)

VERTICAL REPEAT

0.00 in (0.00 cm)

HORIZONTAL REPEAT

0.00 in (0.00 cm)

CONTENT

Pile: 51% Wool, 49%  
Acrylic, Backing: 58%  
Cotton, 42% Polyester

BACKING

FIRE CODES

UFAC Class I, Passes NFPA  
260

DOUBLE RUBS

Exceeds 115,000 Double  
Rubs (Wyzenbeek Method)

PRODUCT NUMBER

8568110

DATE BOOKED

01/2020

COUNTRY

Germany

CLEANING CODES

S

ADDITIONAL PRODUCT NOTES

Exclusive Pattern