

Fabric Product Details

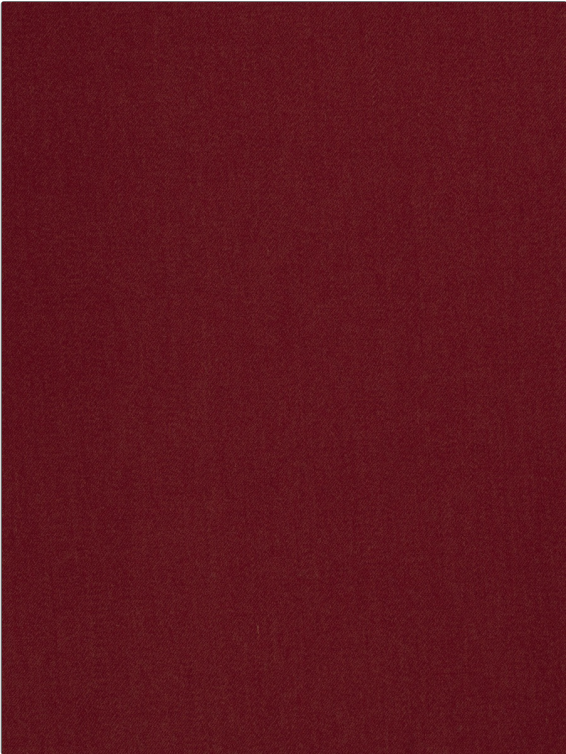
PATTERN **Wool Satin**  
COLOR **05**

BRAND **S. Harris** APPLICATION **Fabric**

USES **Drapery, Upholstery** CATEGORIES **Wool, Wovens**

COLORS **Burgundy** DESIGN TYPES **Solid**

RAILROADED  
**Not Railroaded**



WIDTH	VERTICAL REPEAT	HORIZONTAL REPEAT	CONTENT
<b>54.00 in (137.16 cm)</b>	<b>0.00 in (0.00 cm)</b>	<b>0.00 in (0.00 cm)</b>	<b>100% Wool</b>
BACKING	FIRE CODES	DOUBLE RUBS	PRODUCT NUMBER
	<b>UFAC Class I, Passes NFPA 260</b>	<b>Exceeds 102,000 Double Rubs (Wyzenbeek Method)</b>	<b>8572305</b>
COUNTRY	CLEANING CODES		
<b>Brazil</b>	<b>S</b>		

ADDITIONAL PRODUCT NOTES  
**Ca Tb 117-2013**