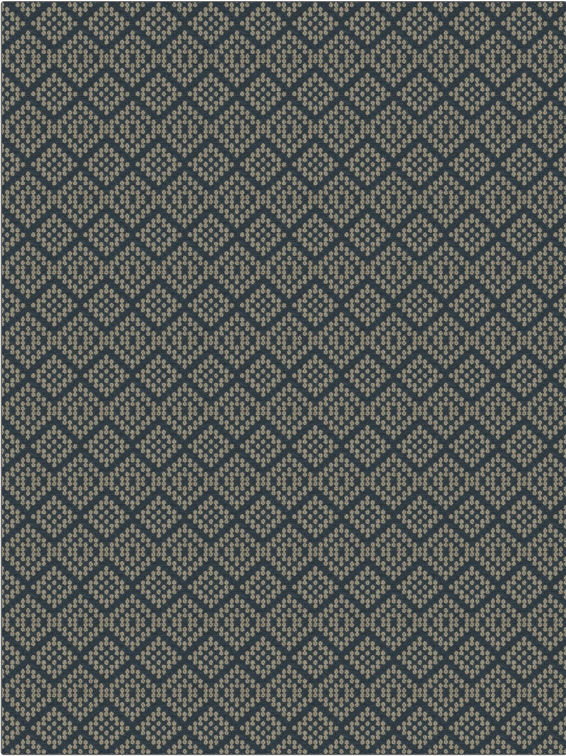


# Fabric Product Details

**PATTERN** Zeavola  
**COLOR** Blue Earth

<b>BRAND</b>	<b>APPLICATION</b>
S. Harris	Fabric
<b>CATEGORIES</b>	<b>BOOK</b>
Outdoor, Wovens	Q2 Performance
<b>COLORS</b>	<b>DESIGN TYPES</b>
Blue, Taupe / Tan	Global / Ethnic, Contemporary / Modern
<b>SCALE</b>	<b>RAILROADED</b>
Small	Not Railroaded



<b>WIDTH</b>	<b>VERTICAL REPEAT</b>	<b>HORIZONTAL REPEAT</b>	<b>CONTENT</b>
56.00 in (142.24 cm)	3.20 in (8.13 cm)	2.50 in (6.35 cm)	100% Polyester
<b>BACKING</b>	<b>FIRE CODES</b>	<b>DOUBLE RUBS</b>	<b>PRODUCT NUMBER</b>
	UFAC Class I / NFPA 260	Exceeds 51,000 Double Rubs (Wyzenbeek Method)	8620903
<b>DATE BOOKED</b>	<b>COUNTRY</b>	<b>CLEANING CODES</b>	
04/2019	Germany	BLEACH CLEANABLE	

**ADDITIONAL PRODUCT NOTES**

Q2, Pfas-Free, Indoor / Covered Outdoor, Ca Tb 117-2013, Bleach Cleanable, Exclusive Pattern