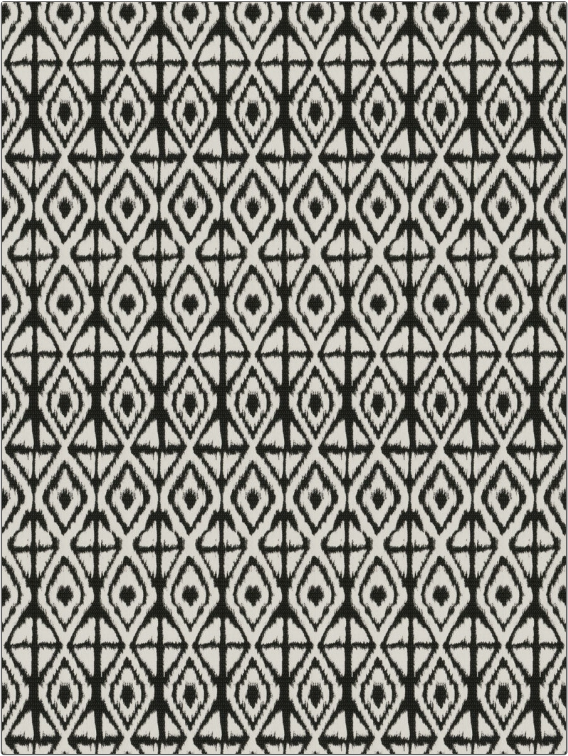


Fabric Product Details

PATTERN	Kalahari
COLOR	Night
BRAND	APPLICATION
S. Harris	Fabric
USES	CATEGORIES
Upholstery	Outdoor, Wovens
BOOK	COLORS
Fall 2017	Black
DESIGN TYPES	SCALE
Global / Ethnic, Contemporary / Modern	Medium
RAILOADED	
Railroaded	



WIDTH	VERTICAL REPEAT	HORIZONTAL REPEAT	CONTENT
55.00 in (139.70 cm)	3.00 in (7.62 cm)	13.70 in (34.80 cm)	74% Olefin, 26% Polyester
BACKING	FIRE CODES	DOUBLE RUBS	PRODUCT NUMBER
100% Latex Backing	UFAC Class I / NFPA 260	Exceeds 33,000 Double Rubs (Wyzenbeek Method)	8664102
DATE BOOKED	COUNTRY	CLEANING CODES	
08/2017	USA	W	

ADDITIONAL PRODUCT NOTES
Indoor / Outdoor, 1,500 Hours Light Fastness, 100% Latex Backing, Shown Railroaded, Exclusive Pattern