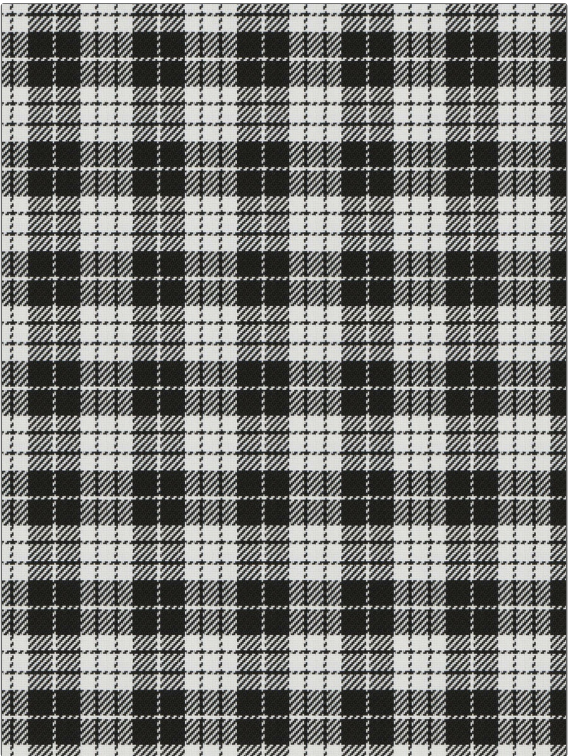


Fabric Product Details

PATTERN	Katelyn
COLOR	Whiteblack
BRAND	APPLICATION
S. Harris	Fabric
USES	CATEGORIES
Upholstery	Outdoor, Wovens
BOOK	COLORS
Fall 2017	Black, White
DESIGN TYPES	SCALE
Small Scale Woven, Check / Plaid, Contemporary / Modern	Medium
RAILOADED	
Not Railroaded	



WIDTH	VERTICAL REPEAT	HORIZONTAL REPEAT	CONTENT
55.00 in (139.70 cm)	5.50 in (13.97 cm)	5.00 in (12.70 cm)	100% Polypropylene
BACKING	FIRE CODES	DOUBLE RUBS	PRODUCT NUMBER
	UFAC Class I / NFPA 260	Exceeds 20,000 Double Rubs (Wyzenbeek Method)	8936401
DATE BOOKED	COUNTRY		
08/2017	Italy		

ADDITIONAL PRODUCT NOTES
Passes 35,000 Martindale Tst, UV Resistance - 1,500 Hours, Indoor / Outdoor, Ca Tb 117-2013, Exclusive Pattern