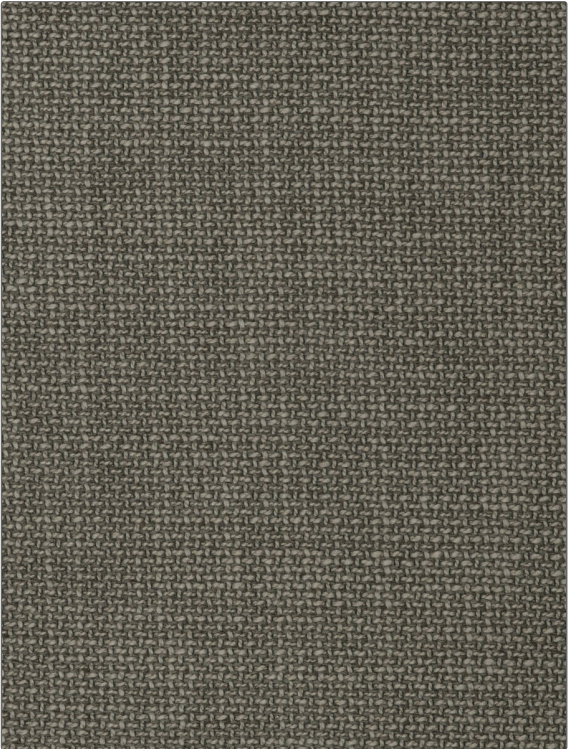


Fabric Product Details

PATTERN	Avatar
COLOR	Rocky

BRAND	APPLICATION
S. Harris	Fabric
USES	CATEGORIES
Upholstery	Wovens, Solids / Small Scale Patterns
BOOK	COLORS
Elements	Taupe / Tan
DESIGN TYPES	RAILROADED
Small Scale Woven, Texture Plain	Not Railroaded



WIDTH	VERTICAL REPEAT	HORIZONTAL REPEAT	CONTENT
54.00 in (137.16 cm)	0.00 in (0.00 cm)	0.00 in (0.00 cm)	36% Viscose, 32% Acrylic, 22% Cotton, 10% Polyester
BACKING	FIRE CODES	DOUBLE RUBS	PRODUCT NUMBER
	UFAC Class I / NFPA 260	Exceeds 15,000 Double Rubs (Wyzenbeek Method)	9013804
DATE BOOKED	COUNTRY	CLEANING CODES	
01/2020	Italy	S	

ADDITIONAL PRODUCT NOTES
Passes 25,000 Martindale Tst, Ca Tb 117-2013