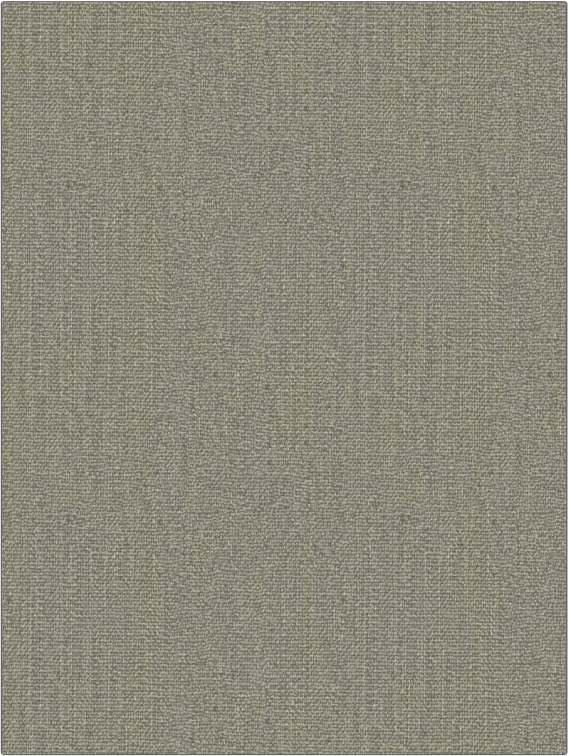


Fabric Product Details

| | |
|---------|------------|
| PATTERN | KB Zenovia |
| COLOR | 02 |

| | |
|----------------|--|
| BRAND | APPLICATION |
| S. Harris | Fabric |
| USES | CATEGORIES |
| Upholstery | Easy To Clean, Wovens, Solids / Small Scale Patterns |
| COLORS | DESIGN TYPES |
| Taupe / Tan | Solid, Texture Plain, Contemporary / Modern |
| RAILROADED | |
| Not Railroaded | |



| | | | |
|---|------------------|-------------------------|---|
| WIDTH | FINISH | VERTICAL REPEAT | HORIZONTAL REPEAT |
| 55.00 in (139.70 cm) | Alta Performance | 0.00 in (0.00 cm) | 0.00 in (0.00 cm) |
| CONTENT | BACKING | FIRE CODES | DOUBLE RUBS |
| 29% Viscose, 24% Acrylic, 18% Cotton, 14% Linen, 13% Wool, 2% Polyester | Knit Backed | UFAC Class I / NFPA 260 | Exceeds 51,000 Double Rubs (Wyzenbeek Method) |
| PRODUCT NUMBER | COUNTRY | CLEANING CODES | |
| 0918402 | Italy | WS | |

| |
|---|
| ADDITIONAL PRODUCT NOTES |
| Pfas-Free, Alta Performance, Easy To Clean Finish, Ca Tb 117-2013, Knit Backed, Exclusive Pattern |