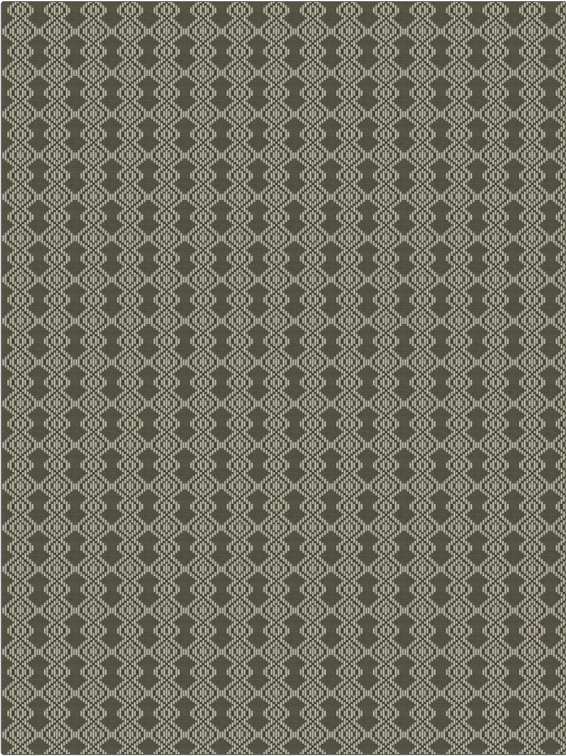


# Fabric Product Details

**PATTERN** Coiled  
**COLOR** Persia

<b>BRAND</b>	<b>APPLICATION</b>
S. Harris	Fabric
<b>USES</b>	<b>CATEGORIES</b>
Upholstery	Wovens
<b>COLORS</b>	<b>DESIGN TYPES</b>
Brown, Taupe / Tan	Global / Ethnic, Contemporary / Modern
<b>SCALE</b>	<b>RAILOADED</b>
Small	Not Railed



<b>WIDTH</b>	<b>VERTICAL REPEAT</b>	<b>HORIZONTAL REPEAT</b>	<b>CONTENT</b>
54.00 in (137.16 cm)	2.25 in (5.72 cm)	1.75 in (4.44 cm)	66% Cotton, 20% Nylon, 14% Linen
<b>BACKING</b>	<b>FIRE CODES</b>	<b>DOUBLE RUBS</b>	<b>PRODUCT NUMBER</b>
	UFAC Class I / NFPA 260	Exceeds 75,000 Double Rubs (Wyzenbeek Method)	9190503
<b>COUNTRY</b>	<b>CLEANING CODES</b>		
USA	S		

**ADDITIONAL PRODUCT NOTES**

Ca Tb 117-2013, Exclusive Pattern