

# Fabric Product Details

**PATTERN** Prismo  
**COLOR** Almond

**BRAND**

S. Harris

**APPLICATION**

Fabric

**USES**

Upholstery

**CATEGORIES**

Wovens

**COLORS**

Taupe / Tan

**DESIGN TYPES**

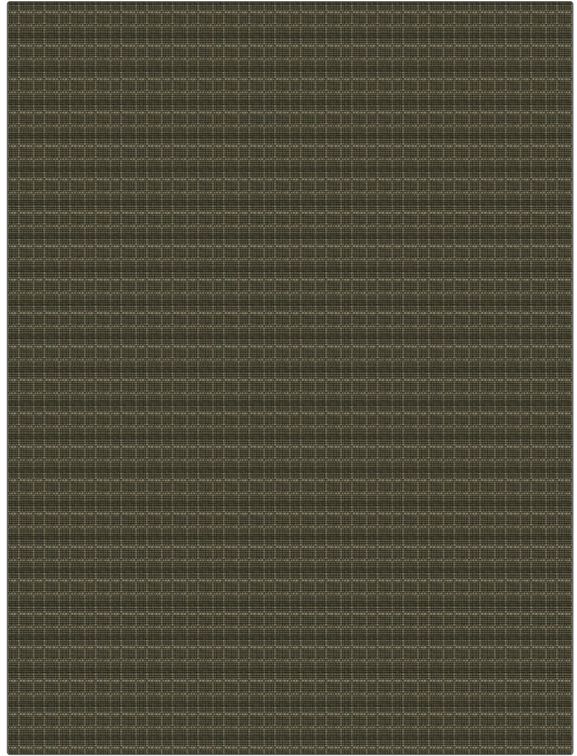
Small Scale Woven,  
Contemporary / Modern

**SCALE**

Small

**RAILROADED**

Not Railroaded



**WIDTH**

54.00 in (137.16 cm)

**FINISH**

Soil & Stain Repellent Finish

**VERTICAL REPEAT**

1.60 in (4.06 cm)

**HORIZONTAL REPEAT**

1.00 in (2.54 cm)

**CONTENT**

67% Rayon, 29% Solution  
Dyed Poly, 4% Polyester

**BACKING**

**FIRE CODES**

UFAC Class I / NFPA 260

**DOUBLE RUBS**

Exceeds 80,000 Double  
Rubs (Wyzenbeek Method)

**PRODUCT NUMBER**

9317501

**COUNTRY**

USA

**CLEANING CODES**

S

**ADDITIONAL PRODUCT NOTES**

Soil & Stain Repellent Finish, Ca Tb 117-2013