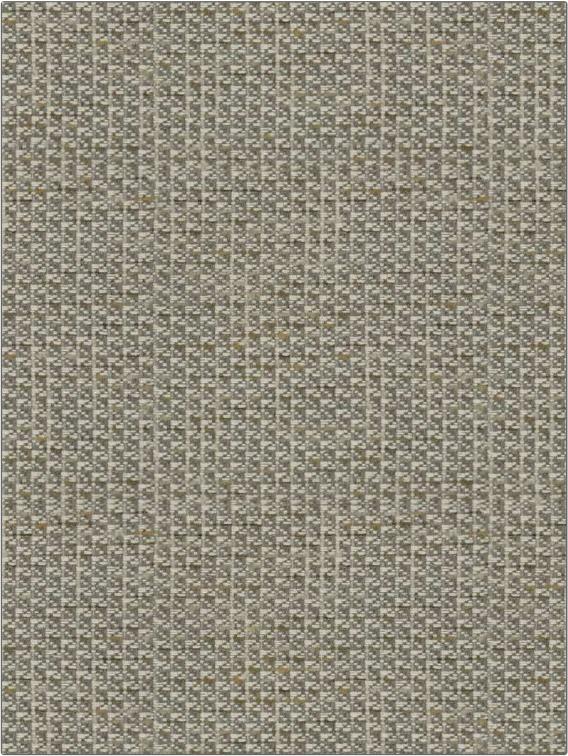


Fabric Product Details

PATTERN	Clout Texture
COLOR	Lead White

BRAND	APPLICATION
S. Harris	Fabric
USES	CATEGORIES
Upholstery	Wovens
COLLECTION	COLORS
Design En Rogue	Grey, Linen, White
DESIGN TYPES	RAILROADED
Small Scale Woven, Texture Plain, Contemporary / Modern	Not Railroaded



WIDTH	VERTICAL REPEAT	HORIZONTAL REPEAT	CONTENT
54.00 in (137.16 cm)	0.00 in (0.00 cm)	0.00 in (0.00 cm)	48% Cotton, 25% Viscose, 9% Nylon, 8% Wool, 7% Polyester, 3% Acrylic
BACKING	FIRE CODES	DOUBLE RUBS	PRODUCT NUMBER
Knit Backing Is Recommended	UFAC Class I / NFPA 260	Exceeds 36,000 Double Rubs (Wyzenbeek Method)	9492703
COUNTRY	CLEANING CODES		
Italy	S		

ADDITIONAL PRODUCT NOTES
Exclusive Pattern, Knit Backing Is Recommended