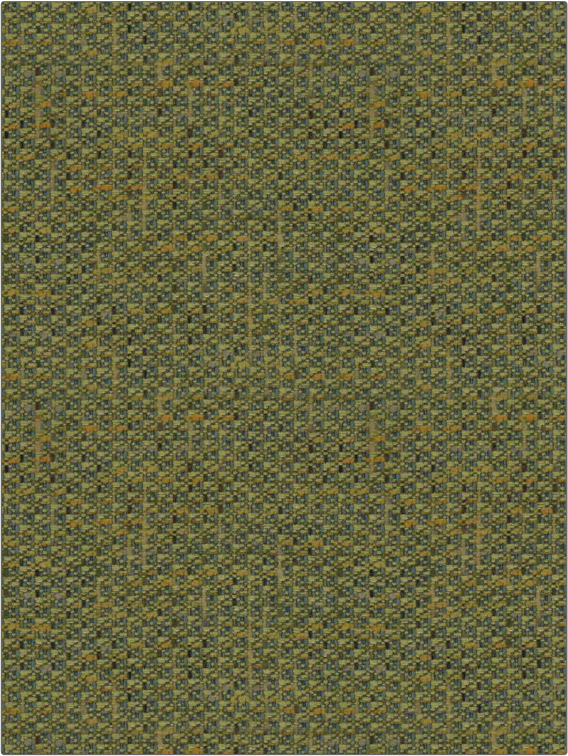


Fabric Product Details

|         |               |
|---------|---------------|
| PATTERN | Clout Texture |
| COLOR   | Gamboge       |

|   |                     |
|---|---------------------|
| BRAND   | APPLICATION         |
| S. Harris   | Fabric              |
| USES  | CATEGORIES          |
| Upholstery  | Wovens              |
| COLLECTION  | COLORS              |
| Design En Rogue   | Yellow, Light Green |
| DESIGN TYPES  | RAILROADED          |
| Small Scale Woven, Texture Plain, Contemporary / Modern | Not Railroaded      |



|                             |                         |   |  |
|-----------------------------|-------------------------|---|--|
| WIDTH                       | VERTICAL REPEAT         | HORIZONTAL REPEAT                             | CONTENT  |
| 54.00 in (137.16 cm)        | 0.00 in (0.00 cm)       | 0.00 in (0.00 cm)                             | 48% Cotton, 25% Viscose, 9% Nylon, 8% Wool, 7% Polyester, 3% Acrylic |
| BACKING                     | FIRE CODES              | DOUBLE RUBS                                   | PRODUCT NUMBER   |
| Knit Backing Is Recommended | UFAC Class I / NFPA 260 | Exceeds 36,000 Double Rubs (Wyzenbeek Method) | 9492704  |
| COUNTRY                     | CLEANING CODES          |   |  |
| Italy                       | S                       |   |  |

|  |
|--|
| ADDITIONAL PRODUCT NOTES                       |
| Exclusive Pattern, Knit Backing Is Recommended |