

# Fabric Product Details

**PATTERN** Clout Texture  
**COLOR** 03

**BRAND**

**S. Harris**

**APPLICATION**

**Fabric**

**USES**

**Upholstery**

**CATEGORIES**

**Wovens**

**COLORS**

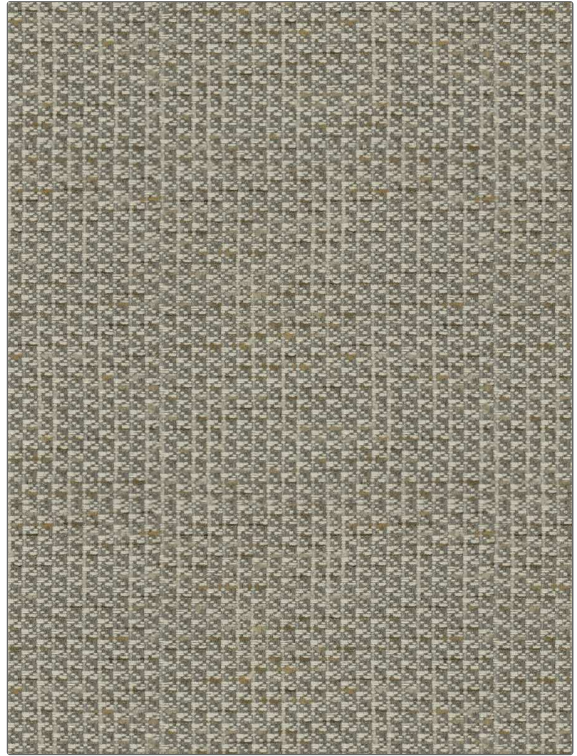
**Grey, Linen, White**

**DESIGN TYPES**

**Small Scale Woven, Texture Plain, Contemporary / Modern**

**RAILROADED**

**Not Railroaded**



**WIDTH**

**54.00 in (137.16 cm)**

**VERTICAL REPEAT**

**0.00 in (0.00 cm)**

**HORIZONTAL REPEAT**

**0.00 in (0.00 cm)**

**CONTENT**

**48% Cotton, 25% Viscose, 9% Nylon, 8% Wool, 7% Polyester, 3% Acrylic**

**BACKING**

**Knit Backing Is Recommended**

**FIRE CODES**

**UFAC Class I / NFPA 260**

**DOUBLE RUBS**

**Exceeds 36,000 Double Rubs (Wyzenbeek Method)**

**PRODUCT NUMBER**

**9492803**

**COUNTRY**

**Italy**

**CLEANING CODES**

**S**

**ADDITIONAL PRODUCT NOTES**

**Exclusive Pattern, Knit Backing Is Recommended**