

Fabric Product Details

PATTERN **Ma Satin**  
COLOR **Peri Blue**

BRAND

**S. Harris**

APPLICATION

**Fabric**

USES

**Bedding, Drapery,  
Multipurpose, Upholstery**

CATEGORIES

**Solids / Small Scale  
Patterns**

BOOK

**East West**

COLORS

**Light Blue, Aqua / Teal**

DESIGN TYPES

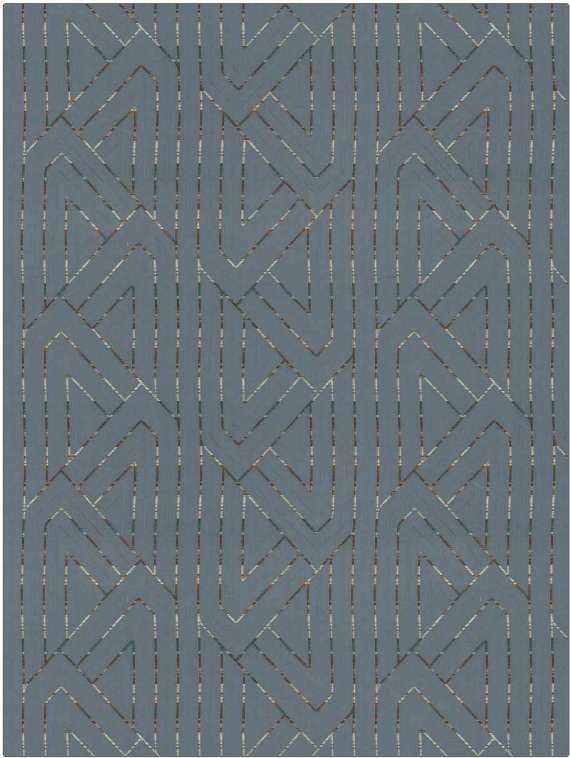
**Geometric, Contemporary /  
Modern**

SCALE

**Small**

RAILROADED

**Not Railroaded**



WIDTH

**52.00 in (132.08 cm)**

VERTICAL REPEAT

**15.54 in (39.47 cm)**

HORIZONTAL REPEAT

**16.93 in (43.00 cm)**

CONTENT

**44% Viscose, 38%  
Polyester, 18% Acrylic**

BACKING

FIRE CODES

**UFAC Class I / NFPA 260**

DOUBLE RUBS

**Exceeds 45,000 Double  
Rubs (Wyzenbeek Method)**

PRODUCT NUMBER

**9493903**

DATE BOOKED

**09/2023**

COUNTRY

**India**

CLEANING CODES

**S**

ADDITIONAL PRODUCT NOTES

**Ca Tb 117-2013, Reversible, Exclusive Pattern**