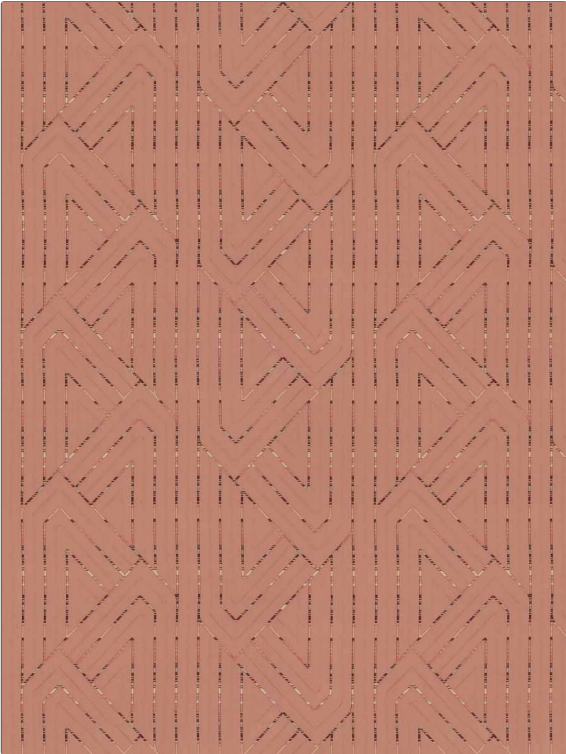


Fabric Product Details

PATTERN Ma Satin
COLOR 04

BRAND	APPLICATION
S. Harris	Fabric
USES	CATEGORIES
Bedding, Drapery, Multipurpose, Upholstery	Solids / Small Scale Patterns
COLORS	DESIGN TYPES
Coral / Peach	Geometric, Contemporary / Modern
SCALE	RAILROADED
Small	Not Railroaded



WIDTH	VERTICAL REPEAT	HORIZONTAL REPEAT	CONTENT
52.00 in (132.08 cm)	15.54 in (39.47 cm)	16.93 in (43.00 cm)	44% Viscose, 38% Polyester, 18% Acrylic
BACKING	FIRE CODES	DOUBLE RUBS	PRODUCT NUMBER
	UFAC Class I / NFPA 260	Exceeds 45,000 Double Rubs (Wyzenbeek Method)	9498904
COUNTRY	CLEANING CODES		
India	S		

ADDITIONAL PRODUCT NOTES

Ca Tb 117-2013, Reversible, Exclusive Pattern