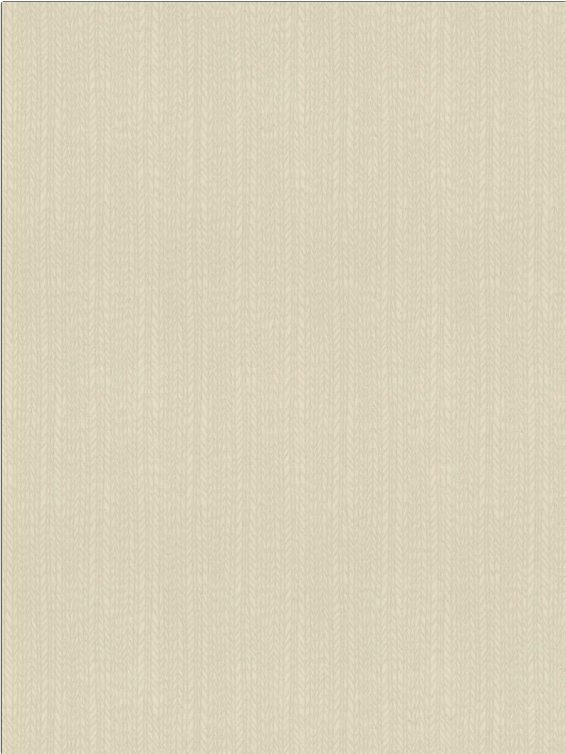


# Fabric Product Details

**PATTERN** Broken Vine  
**COLOR** Oatmeal



<b>BRAND</b>	<b>APPLICATION</b>
S. Harris	Fabric
<b>USES</b>	<b>CATEGORIES</b>
Upholstery	Wovens
<b>BOOK</b>	<b>COLORS</b>
Urban Nomad	Beige
<b>DESIGN TYPES</b>	<b>SCALE</b>
Stripes, Tropical / Botanical, Contemporary / Modern	Medium
<b>RAILROADED</b>	
Not Railroaded	

<b>WIDTH</b>	<b>VERTICAL REPEAT</b>	<b>HORIZONTAL REPEAT</b>	<b>CONTENT</b>
54.00 in (137.16 cm)	13.00 in (33.02 cm)	7.00 in (17.78 cm)	56% Viscose, 37% Cotton, 7% Polyester
<b>BACKING</b>	<b>FIRE CODES</b>	<b>DOUBLE RUBS</b>	<b>PRODUCT NUMBER</b>
	UFAC Class I / NFPA 260	Exceeds 65,000 Double Rubs (Wyzenbeek Method)	9668505
<b>DATE BOOKED</b>	<b>COUNTRY</b>	<b>CLEANING CODES</b>	
11/2017	Belgium	S	

**ADDITIONAL PRODUCT NOTES**

Exclusive Pattern