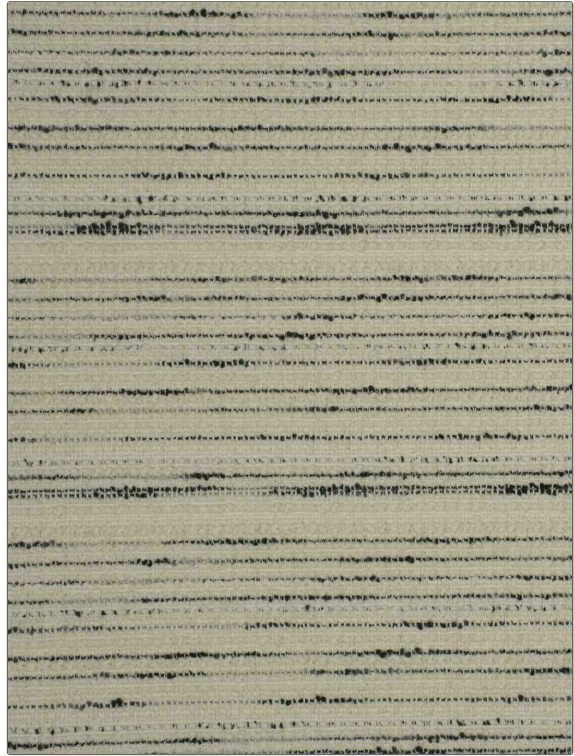


# Fabric Product Details

**PATTERN** Shimmy  
**COLOR** Onyx Pearl

<b>BRAND</b>	<b>APPLICATION</b>
S. Harris	Fabric
<b>USES</b>	<b>CATEGORIES</b>
Upholstery	Wool, Wool / Faux Wool, Wovens, Solids / Small Scale Patterns
<b>BOOK</b>	<b>COLORS</b>
Elements	Black, White
<b>DESIGN TYPES</b>	<b>RAILOADED</b>
Solid, Texture Plain, Contemporary / Modern	Not Railed



<b>WIDTH</b>	<b>VERTICAL REPEAT</b>	<b>HORIZONTAL REPEAT</b>	<b>CONTENT</b>
54.00 in (137.16 cm)	0.00 in (0.00 cm)	0.00 in (0.00 cm)	32% Wool, 31% Acrylic, 20% Cotton, 8% Viscose, 5% Polyester, 4% Nylon
<b>BACKING</b>	<b>FIRE CODES</b>	<b>DOUBLE RUBS</b>	<b>PRODUCT NUMBER</b>
	UFAC Class I / NFPA 260	Exceeds 30,000 Double Rubs (Wyzenbeek Method)	9999601
<b>DATE BOOKED</b>	<b>COUNTRY</b>	<b>CLEANING CODES</b>	
01/2020	Italy	S	

**ADDITIONAL PRODUCT NOTES**  
 Ca Tb 117-2013, Exclusive Pattern