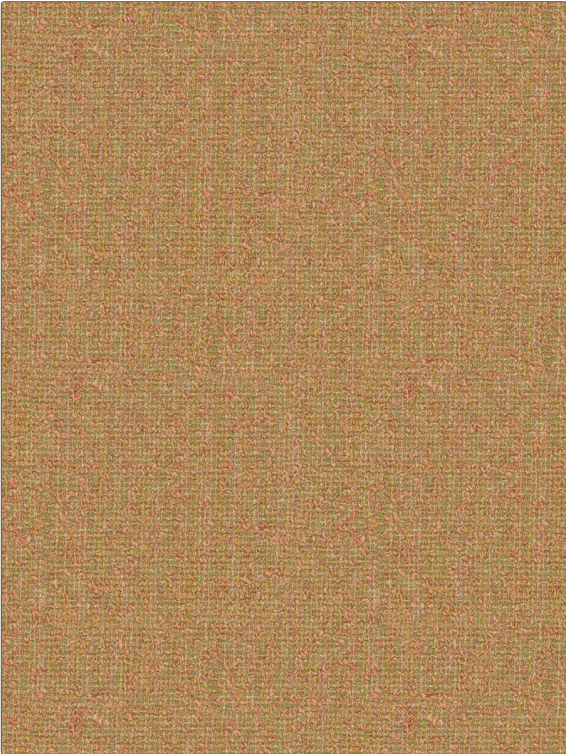


# Fabric Product Details

**PATTERN** Nellie  
**COLOR** 04

<b>BRAND</b>	<b>APPLICATION</b>
Stroheim	Fabric
<b>USES</b>	<b>CATEGORIES</b>
Upholstery	Wovens
<b>COLORS</b>	<b>DESIGN TYPES</b>
Light Green, Coral / Peach, Pink	Small Scale Woven, Texture Plain
<b>SCALE</b>	<b>RAILROADED</b>
Small	Not Railroaded



<b>WIDTH</b>	<b>VERTICAL REPEAT</b>	<b>HORIZONTAL REPEAT</b>	<b>CONTENT</b>
53.00 in (134.62 cm)	0.00 in (0.00 cm)	0.00 in (0.00 cm)	63% Acrylic, 22% Polyester, 10% Cotton, 5% Linen
<b>BACKING</b>	<b>FIRE CODES</b>	<b>DOUBLE RUBS</b>	<b>PRODUCT NUMBER</b>
	UFAC Class I / NFPA 260	Exceeds 27,000 Double Rubs (Wyzenbeek Method)	1323604
<b>COUNTRY</b>	<b>CLEANING CODES</b>		
Turkey	S		

**ADDITIONAL PRODUCT NOTES**

Ca Tb 117-2013, Exclusive Pattern