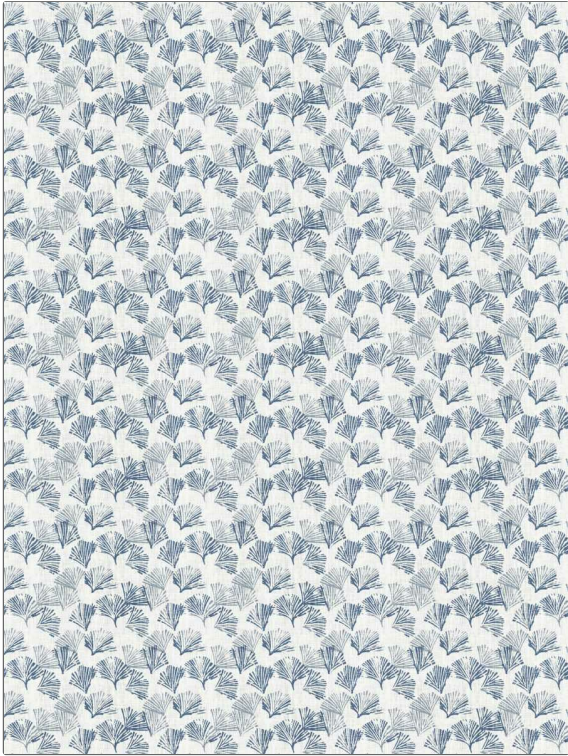


# Fabric Product Details

<b>PATTERN</b>	<b>Layne</b>
<b>COLOR</b>	<b>Oceanside</b>
<b>BRAND</b>	<b>APPLICATION</b>
<b>Stroheim</b>	<b>Fabric</b>
<b>USES</b>	<b>CATEGORIES</b>
<b>Bedding, Drapery, Multipurpose, Upholstery</b>	<b>Handprint, Prints, Linen</b>
<b>BOOK</b>	<b>COLORS</b>
<b>Color Vol. II Oceanside / Tahiti</b>	<b>Blue, Light Blue</b>
<b>DESIGN TYPES</b>	<b>SCALE</b>
<b>Asian, Leaves, Print Pattern, Tropical / Botanical, Contemporary / Modern</b>	<b>Small</b>
<b>RAILROADED</b>	
<b>Not Railroaded</b>	



<b>WIDTH</b>	<b>VERTICAL REPEAT</b>	<b>HORIZONTAL REPEAT</b>	<b>CONTENT</b>
<b>54.00 in (137.16 cm)</b>	<b>6.00 in (15.24 cm)</b>	<b>8.50 in (21.59 cm)</b>	<b>100% Linen</b>
<b>BACKING</b>	<b>FIRE CODES</b>	<b>DOUBLE RUBS</b>	<b>PRODUCT NUMBER</b>
	<b>UFAC Class I / NFPA 260</b>	<b>Exceeds 36,000 Double Rubs (Wyzenbeek Method)</b>	<b>1323903</b>
<b>DATE BOOKED</b>	<b>COUNTRY</b>	<b>CLEANING CODES</b>	
<b>05/2023</b>	<b>India</b>	<b>S</b>	

<b>ADDITIONAL PRODUCT NOTES</b>
<b>Ca Tb 117-2013, Exclusive Pattern</b>