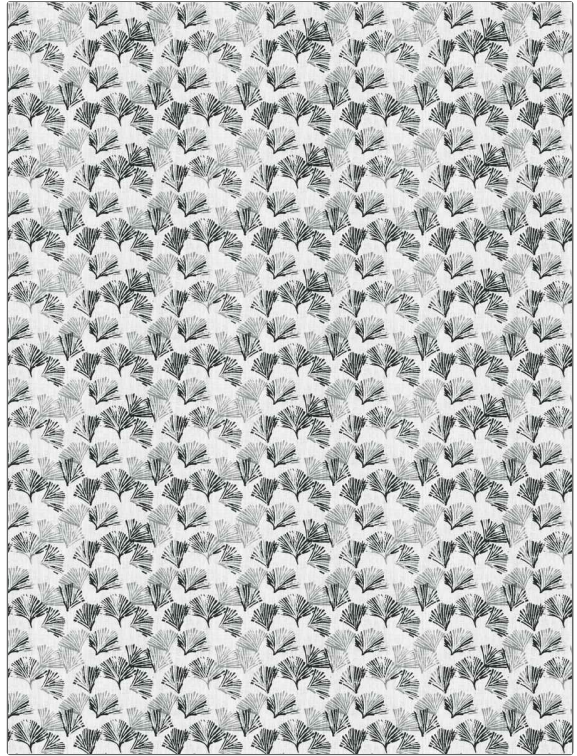


# Fabric Product Details

**PATTERN** Layne  
**COLOR** 04

<b>BRAND</b>	<b>APPLICATION</b>
Stroheim	Fabric
<b>USES</b>	<b>CATEGORIES</b>
Bedding, Drapery, Multipurpose, Upholstery	Handprint, Prints, Linen
<b>COLORS</b>	<b>DESIGN TYPES</b>
Black, Grey	Asian, Leaves, Print Pattern, Tropical / Botanical, Contemporary / Modern
<b>SCALE</b>	<b>RAILROADED</b>
Small	Not Railroaded



<b>WIDTH</b>	<b>VERTICAL REPEAT</b>	<b>HORIZONTAL REPEAT</b>	<b>CONTENT</b>
54.00 in (137.16 cm)	6.00 in (15.24 cm)	8.50 in (21.59 cm)	100% Linen
<b>BACKING</b>	<b>FIRE CODES</b>	<b>DOUBLE RUBS</b>	<b>PRODUCT NUMBER</b>
	UFAC Class I / NFPA 260	Exceeds 36,000 Double Rubs (Wyzenbeek Method)	1324004
<b>COUNTRY</b>	<b>CLEANING CODES</b>		
India	S		

**ADDITIONAL PRODUCT NOTES**

Ca Tb 117-2013, Exclusive Pattern