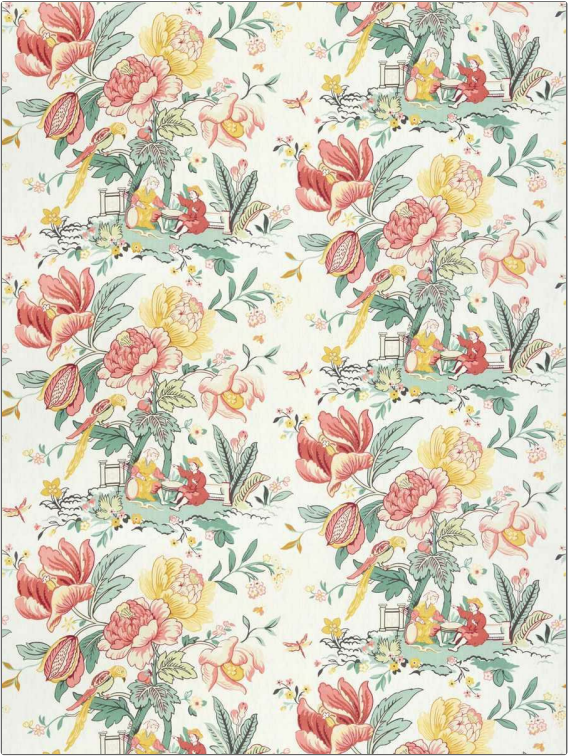


Fabric Product Details

PATTERN	Lita Chinoiserie
COLOR	02

BRAND	APPLICATION
Stroheim	Fabric
USES	CATEGORIES
Bedding, Drapery, Multipurpose, Upholstery	Prints, Linen
COLORS	DESIGN TYPES
Gold, Green, Light Green, Pink	Floral, Asian
SCALE	RAILROADED
Large	Not Railroaded



WIDTH	VERTICAL REPEAT	HORIZONTAL REPEAT	CONTENT
54.00 in (137.16 cm)	27.00 in (68.58 cm)	27.00 in (68.58 cm)	100% Linen
BACKING	FIRE CODES	DOUBLE RUBS	PRODUCT NUMBER
	UFAC Class I / NFPA 260	Exceeds 27,000 Double Rubs (Wyzenbeek Method)	1337402
COUNTRY	CLEANING CODES		
China	S		

ADDITIONAL PRODUCT NOTES
Ca Tb 117-2013, Half Drop Repeat, Exclusive Pattern