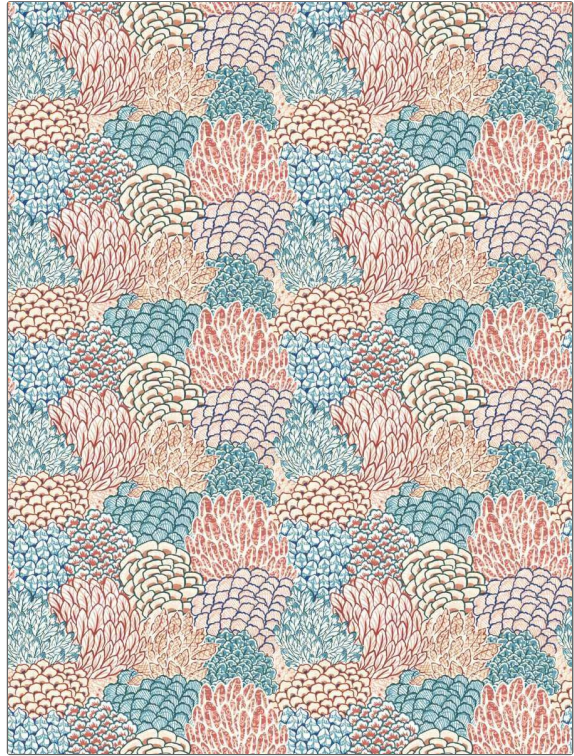


Fabric Product Details

PATTERN Abella
COLOR 03

BRAND	APPLICATION
Stroheim	Fabric
USES	CATEGORIES
Bedding, Drapery, Multipurpose, Upholstery	Prints, Linen
COLORS	DESIGN TYPES
Aqua / Teal, Coral / Peach, Pink, Red	Leaves, Print Pattern, Tropical / Botanical, Contemporary / Modern, Bargello, Dots / Circles
SCALE	RAILROADED
Large	Not Railroaded



WIDTH	VERTICAL REPEAT	HORIZONTAL REPEAT	CONTENT
54.00 in (137.16 cm)	27.00 in (68.58 cm)	18.00 in (45.72 cm)	100% Linen
BACKING	FIRE CODES	DOUBLE RUBS	PRODUCT NUMBER
	UFAC Class I / NFPA 260	Exceeds 30,000 Double Rubs (Wyzenbeek Method)	1338503
COUNTRY	CLEANING CODES		
China	S		

ADDITIONAL PRODUCT NOTES

Ca Tb 117-2013, Exclusive Pattern