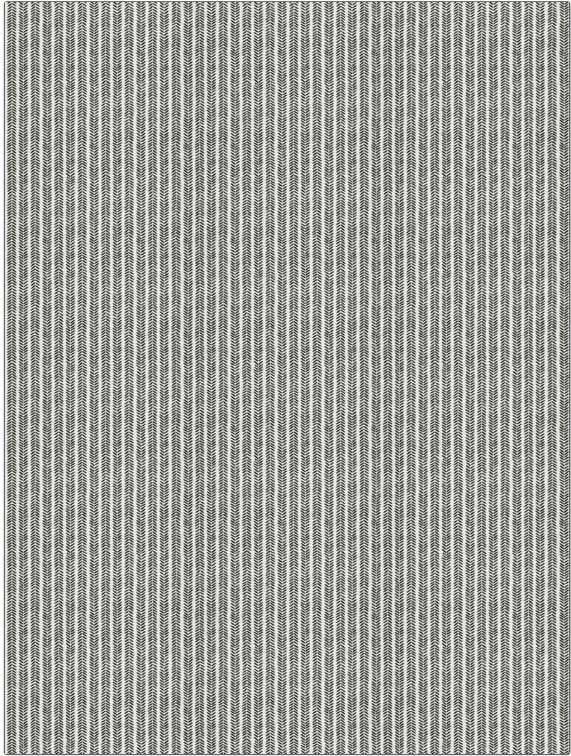


# Fabric Product Details

**PATTERN** Saffi  
**COLOR** 01

|  |  |
|--|--|
| <b>BRAND</b>                               | <b>APPLICATION</b>   |
| Stroheim                                   | Fabric   |
| <b>USES</b>                                | <b>CATEGORIES</b>  |
| Bedding, Drapery, Multipurpose, Upholstery | Solids / Small Scale Patterns, Prints                                  |
| <b>COLORS</b>                              | <b>DESIGN TYPES</b>  |
| Black                                      | Global / Ethnic, Leaves, Print Pattern, Chevron, Contemporary / Modern |
| <b>SCALE</b>                               | <b>RAILROADED</b>  |
| Small                                      | Not Railroaded   |



|                      |                         |   |                       |
|----------------------|-------------------------|---|-----------------------|
| <b>WIDTH</b>         | <b>VERTICAL REPEAT</b>  | <b>HORIZONTAL REPEAT</b>                      | <b>CONTENT</b>        |
| 54.00 in (137.16 cm) | 18.00 in (45.72 cm)     | 9.00 in (22.86 cm)                            | 57% Linen, 43% Cotton |
| <b>BACKING</b>       | <b>FIRE CODES</b>       | <b>DOUBLE RUBS</b>                            | <b>PRODUCT NUMBER</b> |
|                      | UFAC Class I / NFPA 260 | Exceeds 32,000 Double Rubs (Wyzenbeek Method) | 1338701               |
| <b>COUNTRY</b>       | <b>CLEANING CODES</b>   |   |                       |
| China                | S                       |   |                       |

**ADDITIONAL PRODUCT NOTES**

Ca Tb 117-2013, Exclusive Pattern