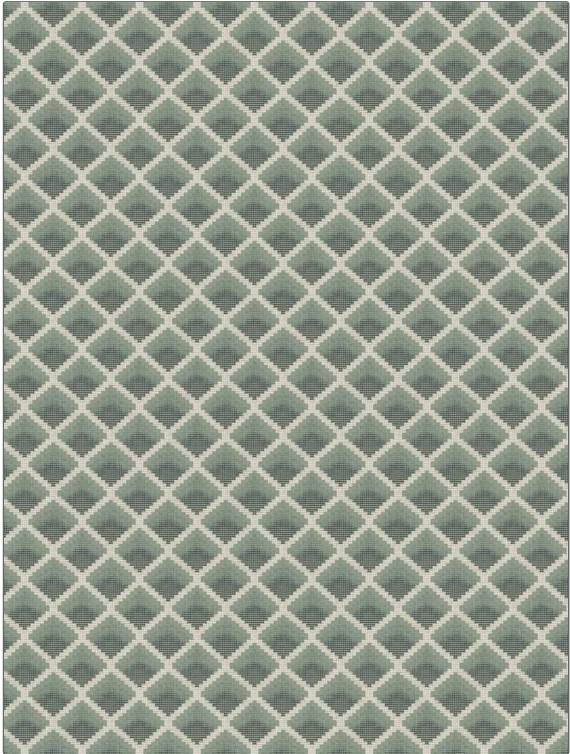


# Fabric Product Details

**PATTERN** Sussette  
**COLOR** Tahiti

<b>BRAND</b>	<b>APPLICATION</b>
Stroheim	Fabric
<b>USES</b>	<b>CATEGORIES</b>
Upholstery	Wovens
<b>BOOK</b>	<b>COLORS</b>
Color Vol. II Oceanside / Tahiti	Aqua / Teal
<b>DESIGN TYPES</b>	<b>SCALE</b>
Geometric, Diamond	Small
<b>RAILROADED</b>	
Not Railroaded	



<b>WIDTH</b>	<b>VERTICAL REPEAT</b>	<b>HORIZONTAL REPEAT</b>	<b>CONTENT</b>
54.00 in (137.16 cm)	2.75 in (6.98 cm)	2.75 in (6.98 cm)	71% Viscose, 19% Polyester, 10% Cotton
<b>BACKING</b>	<b>FIRE CODES</b>	<b>DOUBLE RUBS</b>	<b>PRODUCT NUMBER</b>
	UFAC Class I / NFPA 260	Exceeds 39,000 Double Rubs (Wyzenbeek Method)	1339202
<b>DATE BOOKED</b>	<b>COUNTRY</b>	<b>CLEANING CODES</b>	
05/2023	Turkey	S	

**ADDITIONAL PRODUCT NOTES**  
 Passes 20,000 Martindale Tst, Ca Tb 117-2013, Exclusive Pattern