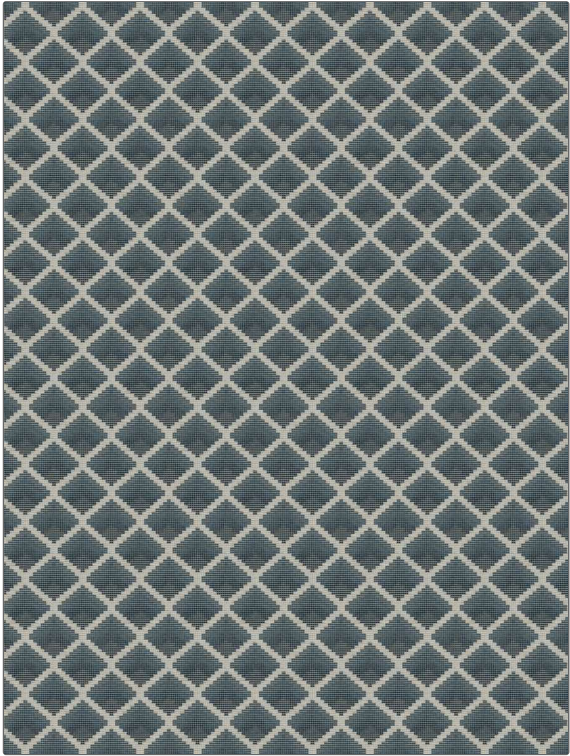


# Fabric Product Details

**PATTERN** Sussette  
**COLOR** 01

|                             |   |
|-----------------------------|---|
| <b>BRAND</b><br>Stroheim    | <b>APPLICATION</b><br>Fabric              |
| <b>USES</b><br>Upholstery   | <b>CATEGORIES</b><br>Wovens               |
| <b>COLORS</b><br>Blue, Navy | <b>DESIGN TYPES</b><br>Geometric, Diamond |
| <b>SCALE</b><br>Small       | <b>RAILOADED</b><br>Not Railed            |



|                                      |  |   |  |
|--------------------------------------|--|---|--|
| <b>WIDTH</b><br>54.00 in (137.16 cm) | <b>VERTICAL REPEAT</b><br>2.75 in (6.98 cm)  | <b>HORIZONTAL REPEAT</b><br>2.75 in (6.98 cm)                       | <b>CONTENT</b><br>71% Viscose, 19% Polyester, 10% Cotton |
| <b>BACKING</b>                       | <b>FIRE CODES</b><br>UFAC Class I / NFPA 260 | <b>DOUBLE RUBS</b><br>Exceeds 39,000 Double Rubs (Wyzenbeek Method) | <b>PRODUCT NUMBER</b><br>1339301                         |
| <b>COUNTRY</b><br>Turkey             | <b>CLEANING CODES</b><br>S                   |   |  |

**ADDITIONAL PRODUCT NOTES**  
 Passes 20,000 Martindale Tst, Ca Tb 117-2013, Exclusive Pattern