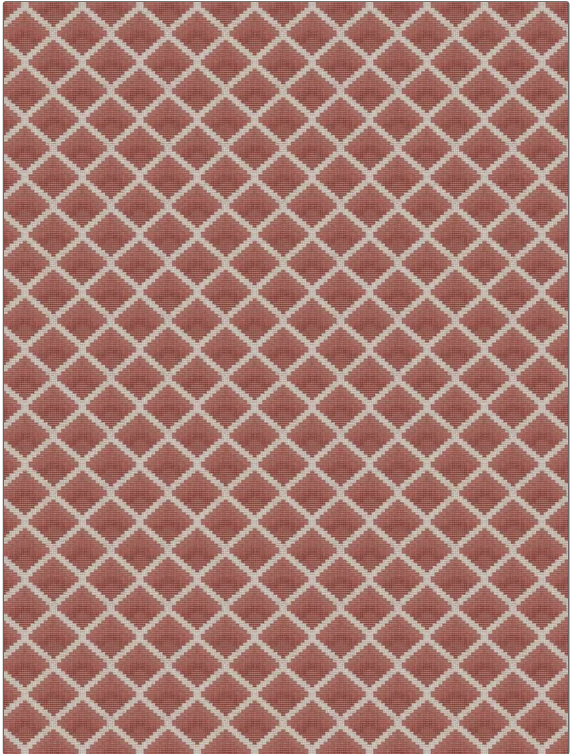


# Fabric Product Details

**PATTERN** Sussette  
**COLOR** 04

<b>BRAND</b>	<b>APPLICATION</b>
Stroheim	Fabric
<b>USES</b>	<b>CATEGORIES</b>
Upholstery	Wovens
<b>COLORS</b>	<b>DESIGN TYPES</b>
Red	Geometric, Diamond
<b>SCALE</b>	<b>RAILROADED</b>
Small	Not Railroaded



<b>WIDTH</b>	<b>VERTICAL REPEAT</b>	<b>HORIZONTAL REPEAT</b>	<b>CONTENT</b>
54.00 in (137.16 cm)	2.75 in (6.98 cm)	2.75 in (6.98 cm)	71% Viscose, 19% Polyester, 10% Cotton
<b>BACKING</b>	<b>FIRE CODES</b>	<b>DOUBLE RUBS</b>	<b>PRODUCT NUMBER</b>
	UFAC Class I / NFPA 260	Exceeds 39,000 Double Rubs (Wyzenbeek Method)	1339304
<b>COUNTRY</b>	<b>CLEANING CODES</b>		
Turkey	S		

**ADDITIONAL PRODUCT NOTES**

Passes 20,000 Martindale Tst, Ca Tb 117-2013, Exclusive Pattern