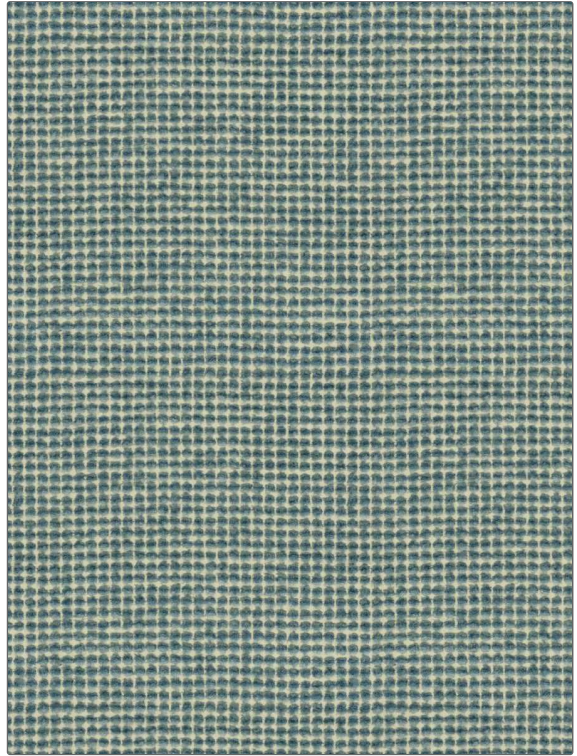


# Fabric Product Details

**PATTERN** Freya  
**COLOR** 02

<b>BRAND</b>	<b>APPLICATION</b>
Stroheim	Fabric
<b>USES</b>	<b>CATEGORIES</b>
Upholstery	Wovens, Solids / Small Scale Patterns
<b>COLORS</b>	<b>DESIGN TYPES</b>
Aqua / Teal	Small Scale Woven, Contemporary / Modern, Abstract, Dots / Circles
<b>SCALE</b>	<b>RAILOADED</b>
Small	Not Railroaded



<b>WIDTH</b>	<b>VERTICAL REPEAT</b>	<b>HORIZONTAL REPEAT</b>	<b>CONTENT</b>
54.00 in (137.16 cm)	0.00 in (0.00 cm)	0.00 in (0.00 cm)	40% Viscose, 30% Cotton, 21% Linen, 9% Polyester
<b>BACKING</b>	<b>FIRE CODES</b>	<b>DOUBLE RUBS</b>	<b>PRODUCT NUMBER</b>
	UFAC Class I / NFPA 260	Exceeds 33,000 Double Rubs (Wyzenbeek Method)	1340302
<b>COUNTRY</b>	<b>CLEANING CODES</b>		
Turkey	S		

**ADDITIONAL PRODUCT NOTES**

Passes 22,000 Martindale Tst, Ca Tb 117-2013, Exclusive Pattern