

Fabric Product Details

PATTERN
COLOR

Meyer
Coral Punch

BRAND

Stroheim

APPLICATION

Fabric

USES

Upholstery

CATEGORIES

Bella - Dura, Outdoor, Easy To Clean, Wovens, Solids / Small Scale Patterns

BOOK

Color Indoor / Outdoor

COLORS

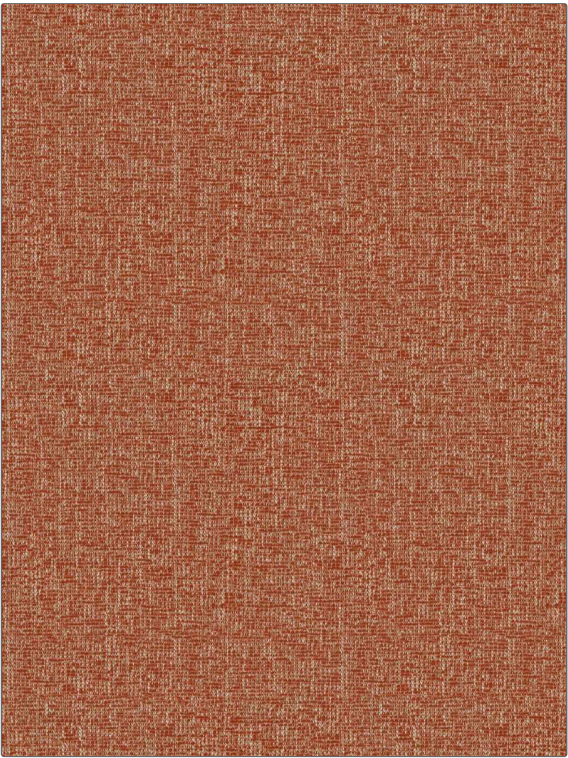
Orange / Spice, Coral / Peach

DESIGN TYPES

Solid, Texture Plain

RAILROADED

Not Railroaded



WIDTH

54.00 in (137.16 cm)

FINISH

Water Resistant

VERTICAL REPEAT

0.00 in (0.00 cm)

HORIZONTAL REPEAT

0.00 in (0.00 cm)

CONTENT

79% High UV Polyester, 21% Polyolefin

BACKING

100% Latex Backing

FIRE CODES

Does Not Contain FR Chemicals, UFAC Class I / NFPA 260

DOUBLE RUBS

Exceeds 30,000 Double Rubs (Wyzenbeek Method)

PRODUCT NUMBER

1375604

DATE BOOKED

05/2023

COUNTRY

USA

CLEANING CODES

WS, BLEACH CLEANABLE

ADDITIONAL PRODUCT NOTES

Water Resistant, Soil & Stain Repellent Finish, Pfas-Free, Bella Dura Home, Easy To Clean Finish, 1,000 Hours Light Fastness, Indoor / Outdoor, Ca Tb 117-2013, 100% Latex Backing, Bleach Cleanable, Exclusive Pattern