

Fabric Product Details

PATTERN **Splendid**  
COLOR **Aloe**

BRAND

**Stroheim**

APPLICATION

**Fabric**

USES

**Upholstery**

CATEGORIES

**Bella - Dura, Outdoor, Easy To Clean, Wovens, Solids / Small Scale Patterns**

BOOK

**Color Indoor / Outdoor**

COLORS

**Light Green**

DESIGN TYPES

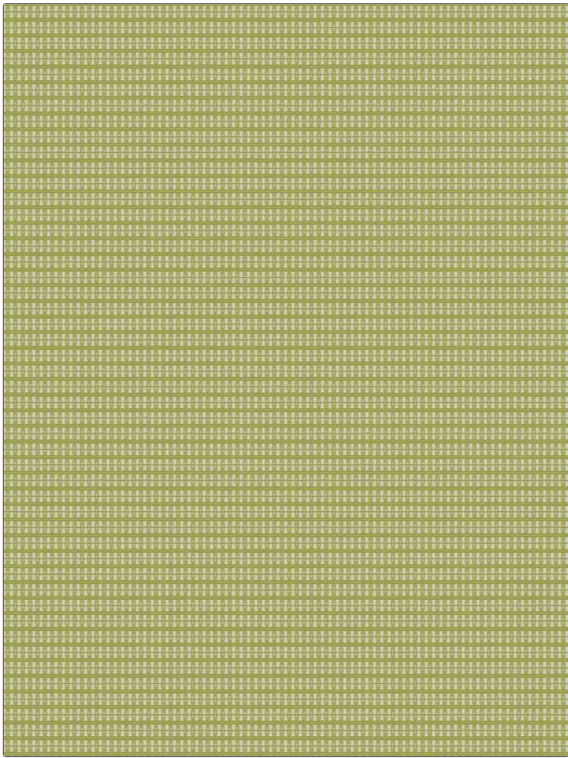
**Small Scale Woven, Contemporary / Modern**

SCALE

**Small**

RAILROADED

**Not Railroaded**



WIDTH

**54.00 in (137.16 cm)**

FINISH

**Water Resistant**

VERTICAL REPEAT

**1.00 in (2.54 cm)**

HORIZONTAL REPEAT

**0.50 in (1.27 cm)**

CONTENT

**52% High UV Polyester, 48% Polyolefin**

BACKING

FIRE CODES

**Does Not Contain FR Chemicals, UFAC Class I / NFPA 260**

DOUBLE RUBS

**Exceeds 30,000 Double Rubs (Wyzenbeek Method)**

PRODUCT NUMBER

**1376203**

DATE BOOKED

**05/2023**

COUNTRY

**USA**

CLEANING CODES

**WS, BLEACH CLEANABLE**

ADDITIONAL PRODUCT NOTES

**Water Resistant, Soil & Stain Repellent Finish, Pfas-Free, Bella Dura Home, Easy To Clean Finish, 1,000 Hours Light Fastness, Indoor / Outdoor, Ca Tb 117-2013, Bleach Cleanable, Exclusive Pattern**