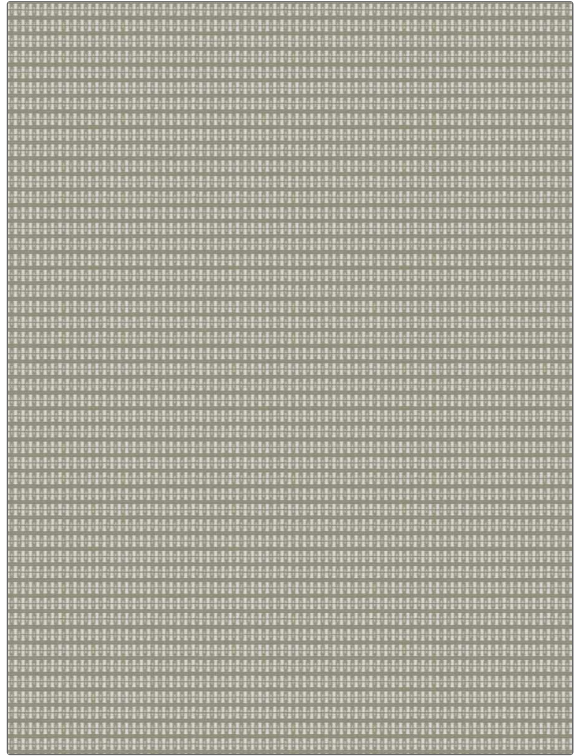


Fabric Product Details

PATTERN Splendid
COLOR 02

BRAND	APPLICATION
Stroheim	Fabric
USES	CATEGORIES
Upholstery	Bella - Dura, Outdoor, Easy To Clean, Wovens, Solids / Small Scale Patterns
COLORS	DESIGN TYPES
Grey, Aqua / Teal	Small Scale Woven, Contemporary / Modern
SCALE	RAILROADED
Small	Not Railroaded



WIDTH	FINISH	VERTICAL REPEAT	HORIZONTAL REPEAT
54.00 in (137.16 cm)	Water Resistant	1.00 in (2.54 cm)	0.50 in (1.27 cm)
CONTENT	BACKING	FIRE CODES	DOUBLE RUBS
52% High UV Polyester, 48% Polyolefin		Does Not Contain FR Chemicals, UFAC Class I / NFPA 260	Exceeds 30,000 Double Rubs (Wyzenbeek Method)
PRODUCT NUMBER	COUNTRY	CLEANING CODES	
1376302	USA	WS, BLEACH CLEANABLE	

ADDITIONAL PRODUCT NOTES

Water Resistant, Soil & Stain Repellent Finish, Pfas-Free, Bella Dura Home, Easy To Clean Finish, 1,000 Hours Light Fastness, Indoor / Outdoor, Ca Tb 117-2013, Bleach Cleanable, Exclusive Pattern