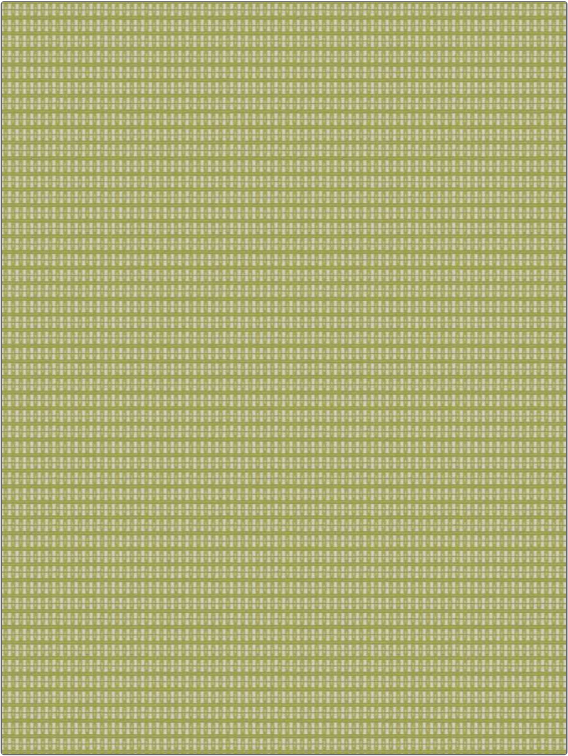


Fabric Product Details

| | |
|---------|----------|
| PATTERN | Splendid |
| COLOR | 03 |

| | |
|-------------|---|
| BRAND | APPLICATION |
| Stroheim | Fabric |
| USES | CATEGORIES |
| Upholstery | Bella - Dura, Outdoor, Easy To Clean, Wovens, Solids / Small Scale Patterns |
| COLORS | DESIGN TYPES |
| Light Green | Small Scale Woven, Contemporary / Modern |
| SCALE | RAILROADED |
| Small | Not Railroaded |



| | | | |
|---------------------------------------|-----------------|--|---|
| WIDTH | FINISH | VERTICAL REPEAT | HORIZONTAL REPEAT |
| 54.00 in (137.16 cm) | Water Resistant | 1.00 in (2.54 cm) | 0.50 in (1.27 cm) |
| CONTENT | BACKING | FIRE CODES | DOUBLE RUBS |
| 52% High UV Polyester, 48% Polyolefin | | Does Not Contain FR Chemicals, UFAC Class I / NFPA 260 | Exceeds 30,000 Double Rubs (Wyzenbeek Method) |
| PRODUCT NUMBER | COUNTRY | CLEANING CODES | |
| 1376303 | USA | WS, BLEACH CLEANABLE | |

| |
|---|
| ADDITIONAL PRODUCT NOTES |
| Water Resistant, Soil & Stain Repellent Finish, Pfas-Free, Bella Dura Home, Easy To Clean Finish, 1,000 Hours Light Fastness, Indoor / Outdoor, Ca Tb 117-2013, Bleach Cleanable, Exclusive Pattern |